



**Gresham House**  
*Specialist asset management*

# Sustainable Productive Forestry

**Olly Hughes, Gresham House**

---

December 2022



# DISCLAIMER

This presentation (the Presentation) is issued on a confidential basis by Gresham House for information purposes only. This Presentation, its contents and any information provided or discussed in connection with it are strictly private and confidential and may not be reproduced, redistributed or passed on, directly or indirectly, to any other person or published, in whole or in part, for any purpose, without the consent of Gresham House (provided that you may disclose this Presentation on a confidential basis to your legal, tax or investment advisers (if any) for the purposes of obtaining advice).

Your acceptance of delivery of any part of the Presentation constitutes unconditional acceptance of the terms and conditions of this notice.

This Presentation does not itself constitute an offer to subscribe for or purchase any limited partnership interests or other securities. This Presentation is not intended to be relied upon as the basis for an investment decision, and is not, and should not be assumed to be, complete. It is provided for information purposes only. Any investment is subject to various risks, none of which are outlined herein. All such risks should be carefully considered by prospective investors before they make any investment decision.

You are not entitled to rely on this Presentation and no responsibility is accepted by Gresham House or any of its directors, officers, partners, members, agents or advisers or any other person for any action taken on the basis of the content of this Presentation. Gresham House does not undertake to provide the recipient with access to any additional information or to update this Presentation or to correct any inaccuracies therein which may become apparent.

No undertaking, representation, warranty or other assurance, express or implied, is made or given by or on behalf of Gresham House or any of its respective directors, officers, partners, members, agents or advisers or any other person as to the accuracy or completeness of the information or opinions contained in this Presentation and no responsibility or liability is accepted by any of them for any such information or opinions.

Past performance is not indicative of future results. The value of investments may fall as well as rise and investors may not get back the amount invested. Changes in rates of foreign exchange may cause the value of investments to go up or down.

No representation is being made that any investment will or is likely to achieve profits or losses similar to those achieved in the past, or that significant losses will be avoided.

The internal rates of return or IRRs presented on a “gross” basis do not reflect any management fees, carried interest, taxes and allocable expenses of the kind that will be borne by investors in a fund, which in the aggregate may be substantial.

Statements contained in this Presentation that are not historical facts are based on current expectations, estimates, projections, opinions and beliefs of Gresham House. Such statements involve known and unknown risks, uncertainties and other factors, and undue reliance should not be placed thereon. In addition, this Presentation contains “forward-looking statements.” Actual events or results or the actual performance of the Fund may differ materially from those reflected or contemplated in such forward-looking statements.

Certain economic and market information contained herein has been obtained from published sources prepared by third parties and in certain cases has not been updated through the date hereof. While such sources are believed to be reliable, neither Gresham House nor any of its directors, partners, members, officers or employees assumes any responsibility for the accuracy or completeness of such information.

No person, especially those who do not have professional experience in matters relating to investments, must rely on the contents of this Presentation. If you are in any doubt as to the matters contained in this Presentation you should seek independent advice where necessary. This Presentation has not been submitted to or approved by the securities regulatory authority of any state or jurisdiction.

#### *For the Attention of United Kingdom Investors*

This Presentation is intended for distribution in the United Kingdom only to persons who: (i) have professional experience in matters relating to investments, who are investment professionals, high net worth companies, high net worth unincorporated associations or partnerships or trustees of high value trusts, and investment personnel of any of the foregoing (each within the meaning of the Financial Services and Markets Act 2000 (Financial Promotion) Order 2005).

# GREEN DESERT...



Since 1837

Gresham House  
*Specialist asset management*



# ...OR DIVERSE PRODUCTIVE ECOSYSTEM



Since 1837  
**Gresham House**  
*Specialist asset management*



# BIODIVERSITY AND NATURAL CAPITAL

## eDNA - Data survey 2022

- Fish **7**
- Amphibians **4**
- Birds **22**
- Mammals **16**
- All invertebrates **310**
  - 20+ invertebrates never recorded
  - endangered eels

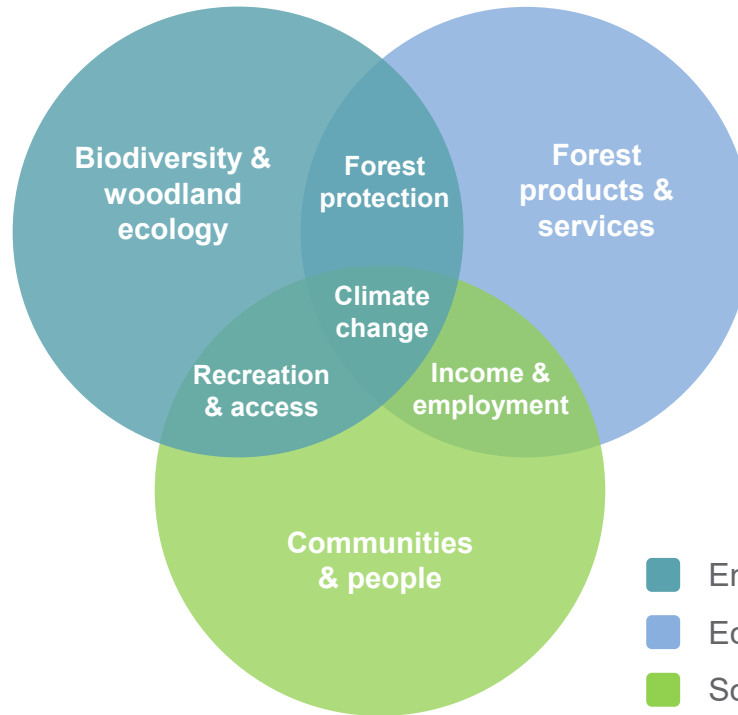
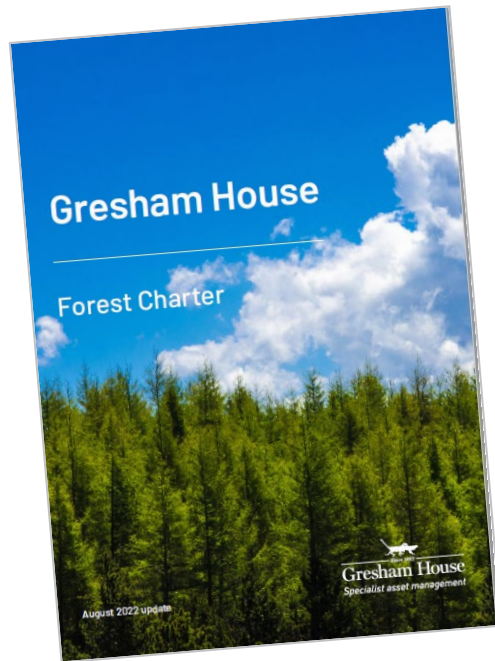


Since 1837  
**Gresham House**  
Specialist asset management

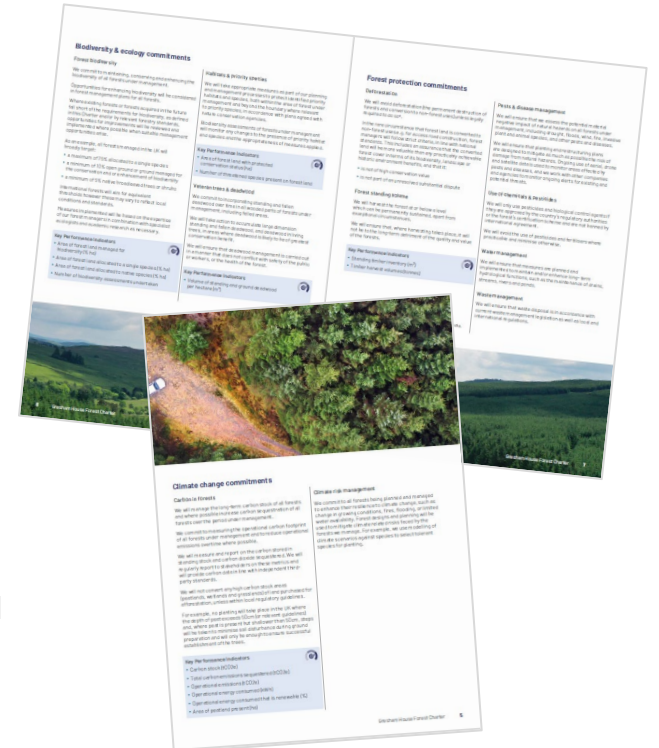


# SUSTAINABLE FORESTRY MANAGEMENT

The Gresham House Forest Charter sets out our verifiable commitments and targets for ongoing sustainable forest management and natural capital development.



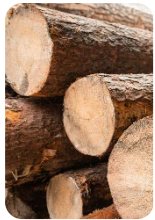
- Environmental
- Economic
- Social



UK Forestry Standard, Balanced objectives<sup>1</sup>

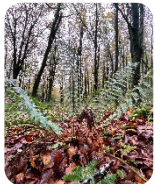
# GRESHAM HOUSE FOREST CHARTER

Our Forestry Charter commitments seek to protect and enhance the long-term value of our forests and protect our license to operate by maintaining respectful and beneficial relationships with all stakeholders.



## Forest products & services

- Ensure 100% of timber sold is certified to international standards
- Generate reliable and transparent carbon credits



## Biodiversity & woodland ecology

- Maintain, conserve and enhance biodiversity
- Protect priority habitats and species



## Income & employment

- Target accident-free workplaces
- Promote fair and diverse working conditions and discrimination-free workplaces



## Climate change

- Increase carbon sequestration and reduce operational emissions where possible
- Protect high carbon stock land



## Forest protection

- Avoid deforestation
- Minimise use of pesticides and fertilisers
- Maintain or enhance hydrological functions



## Communities & people

- Engage with local communities
- Protect rights of local communities, including Indigenous Peoples, and historic sites
- Provide public recreational and educational access

# LET'S MAKE POSITIVE IMPACT



Since 1837

Gresham House  
*Specialist asset management*

