

A photograph of a forest with tall, thin trees and a dense undergrowth of ferns. The text is overlaid on the image in three horizontal green bars.

National Wood Strategy for England.

Delivered by The England Forest and
Wood Based Industry Leadership Group.
Presentation by Tom Barnes.

40-year strategy for planting, growing, harvesting and processing conifer and broadleaf trees in England.

A concise 30 to 40-page strategy
document backed up with case studies.

A photograph of a forest path. The path is covered in fallen leaves and ferns. Tall, thin trees line the path, and sunlight filters through the canopy, creating a bright, dappled light effect. The overall atmosphere is peaceful and natural.

**To instill a
positive attitude
towards productive
forestry in England.**

A photograph of a forest landscape. In the background, a dense stand of tall, thin evergreen trees reaches towards a clear blue sky. The foreground is dominated by a thick layer of undergrowth, including various shrubs and small evergreen saplings, some with brownish leaves, suggesting an autumn or late summer setting. The overall scene is well-lit, with natural sunlight filtering through the trees.

**To prioritise
productivity as
a forest policy
objective.**

For 40 years
productivity
in English
woodlands has
been sidelined
as a policy
objective.

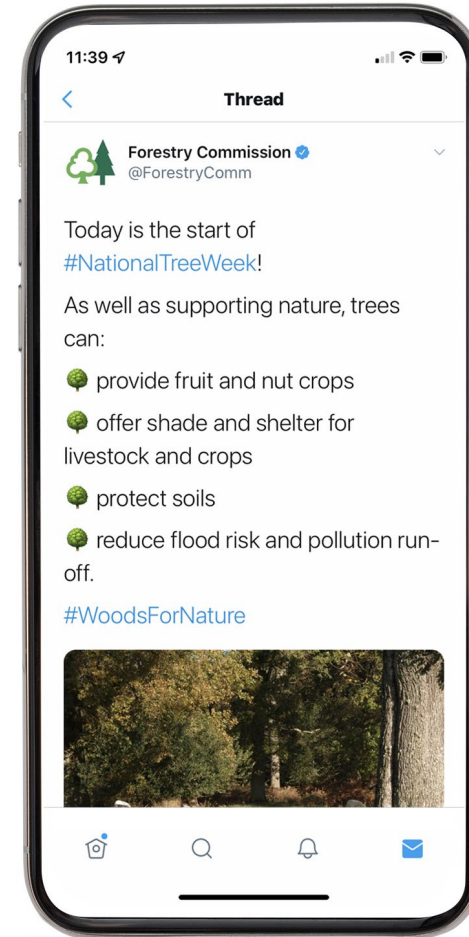
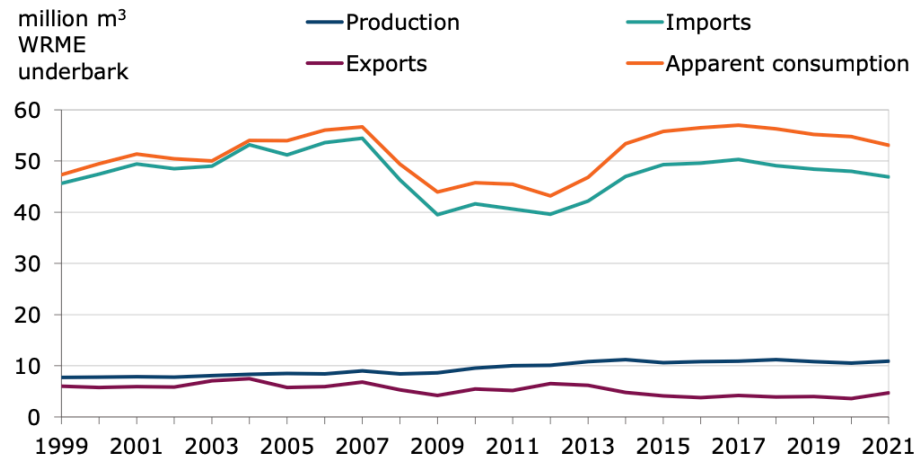


Figure 3.1 Apparent consumption of wood¹, UK, 1999 to 2021



Source: Industry surveys, industry associations, UK overseas trade statistics (HM Revenue & Customs) and conversion factors to Wood Raw Material Equivalent (WRME).

Notes:

1. Excludes recovered paper.
2. UK production of roundwood is estimated from deliveries to wood processing industries and others, as in Tables 2.5 and 2.6.

80% of timber imported.

Global demand for timber to outstrip supply before 2050.

Peak wood in UK around 2040.

The Strategy will be owned by the Industry Leadership Group which includes representatives from:

- Confor.
- DEFRA.
- Forestry Commission.
- Processors large and small.
- Nursery sector.
- Woodland managers.

It will be authored by Tom Barnes and Andy Leitch.

A photograph of a forest with a green banner overlaying the text "We Need You." The banner is a solid green rectangle with the text in white, bold, sans-serif font. The background shows a dense forest of trees, some with bare branches and some with green leaves, suggesting a transition between seasons. The ground is covered in dry, brown brush and fallen branches.

We Need You.

We would like to work with as many organisations and individuals as possible to give the strategy a strong set of foundations.

We will circulate an introduction and proposed content:

- **Directly.**
- **On Confor Website.**
- **Promote it via social media.**

Consultation period between now and 11th of January.

We will deliver the Strategy on 31st March 2023.

What have we **missed?**

Examples good and bad.

Agree or disagree?



Persuasive **data.**

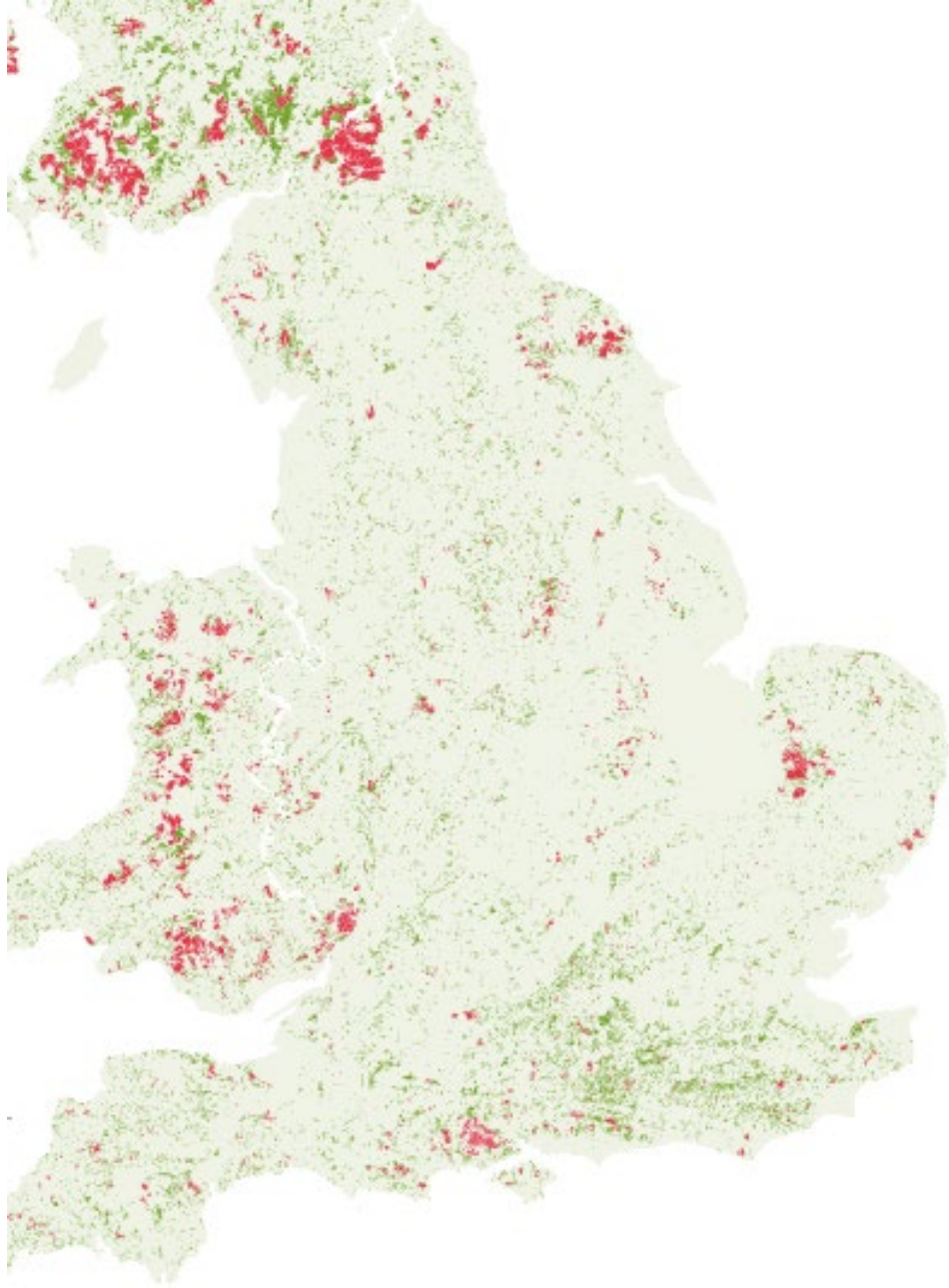
Specific actions.

What are the **blockers?**

What are the **solutions?**



Proposed Content.



England's wood resource

- Brief history
- Current state of English woodlands
- Projected wood resource
- Future trajectory without policy change
- + Global wood resource

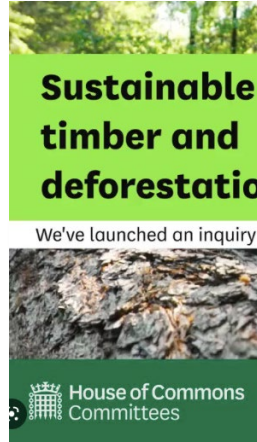
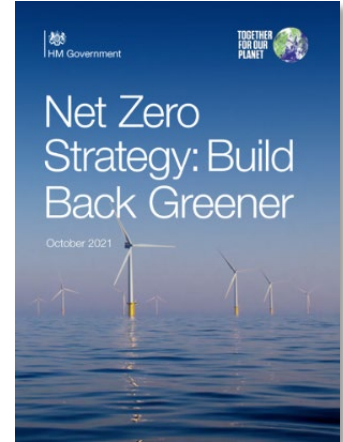
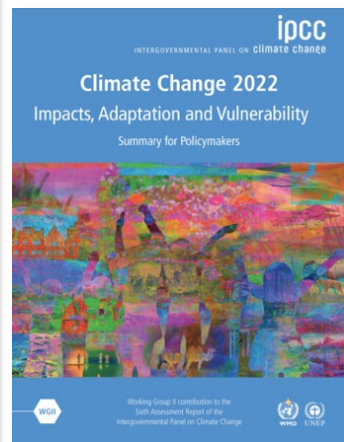
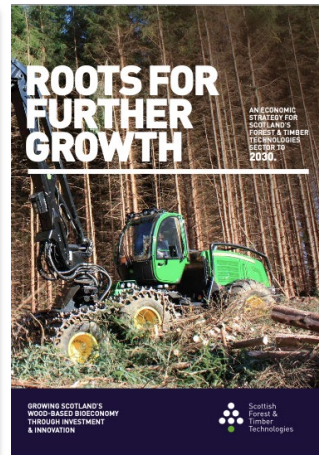
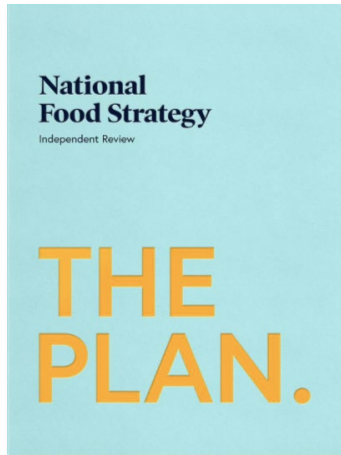


The wood sector

- Who's who
- Where they are
- What they do

NWSE in context

- Who wants more locally grown wood?
- Tree planting targets
- ETAP
- Strategies for : Net Zero, Food, Housing, Green Growth, Energy etc



Strategic Vision

- Increase rates of planting to achieve Government targets
- An expansion of productive conifer and broadleaf
- Increase carbon and economic contribution
- Increase use of British timber
- Unlock private sector investment in forestry

(Targets for all to be decided)

Challenges

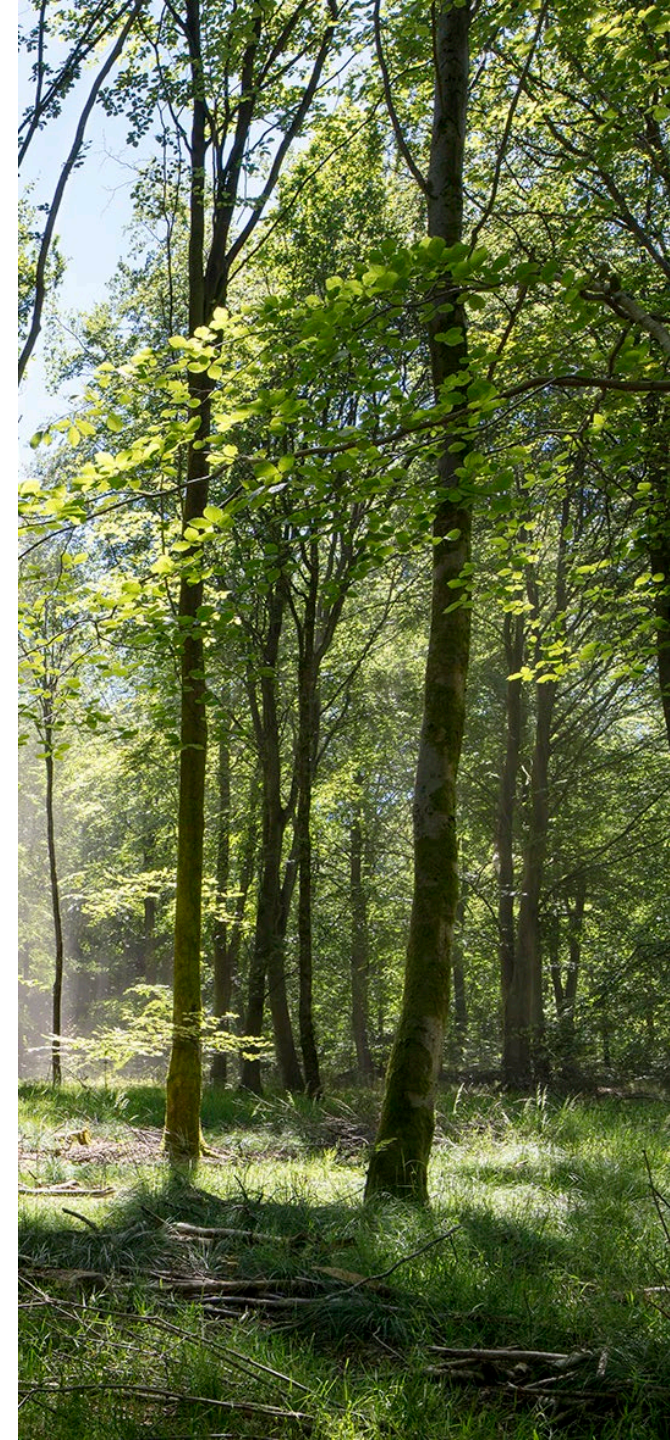
- **DEFORESTATION**
- **Little planting. Very little productive planting**
- **Shrinking area of productive conifer**
- **Pest damage to broadleaf planting**
- **All emphasis on biodiversity and carbon. None on wood production.**
- **Very restrictive regulation**
- **Public perception.**





Opportunities

- **Turbo charge tree planting and woodland creation**
- **Unlock private capital**
- **Improve tree quality**
- **Create a resilient local supply of wood**
- **Maximise benefits of land under trees**
- **Contribute to carbon reduction targets**





Collaboration

- **Organisations that have made the case for growing and producing more of our timber in this country?**
- **More names = A stronger, more persuasive and longer lasting strategy.**
- **It's time to stand up and be counted!**

Action

Plan

- Policy
- Regulation
- Planting
- Management
- R&D
- Developing markets
- Skills

Case Studies

- **Productive mixed conifer and broadleaf woodlands.**
- **Unproductive, poor quality broadleaf planting**

