

Confor – South Scotland Region

16 March 2022

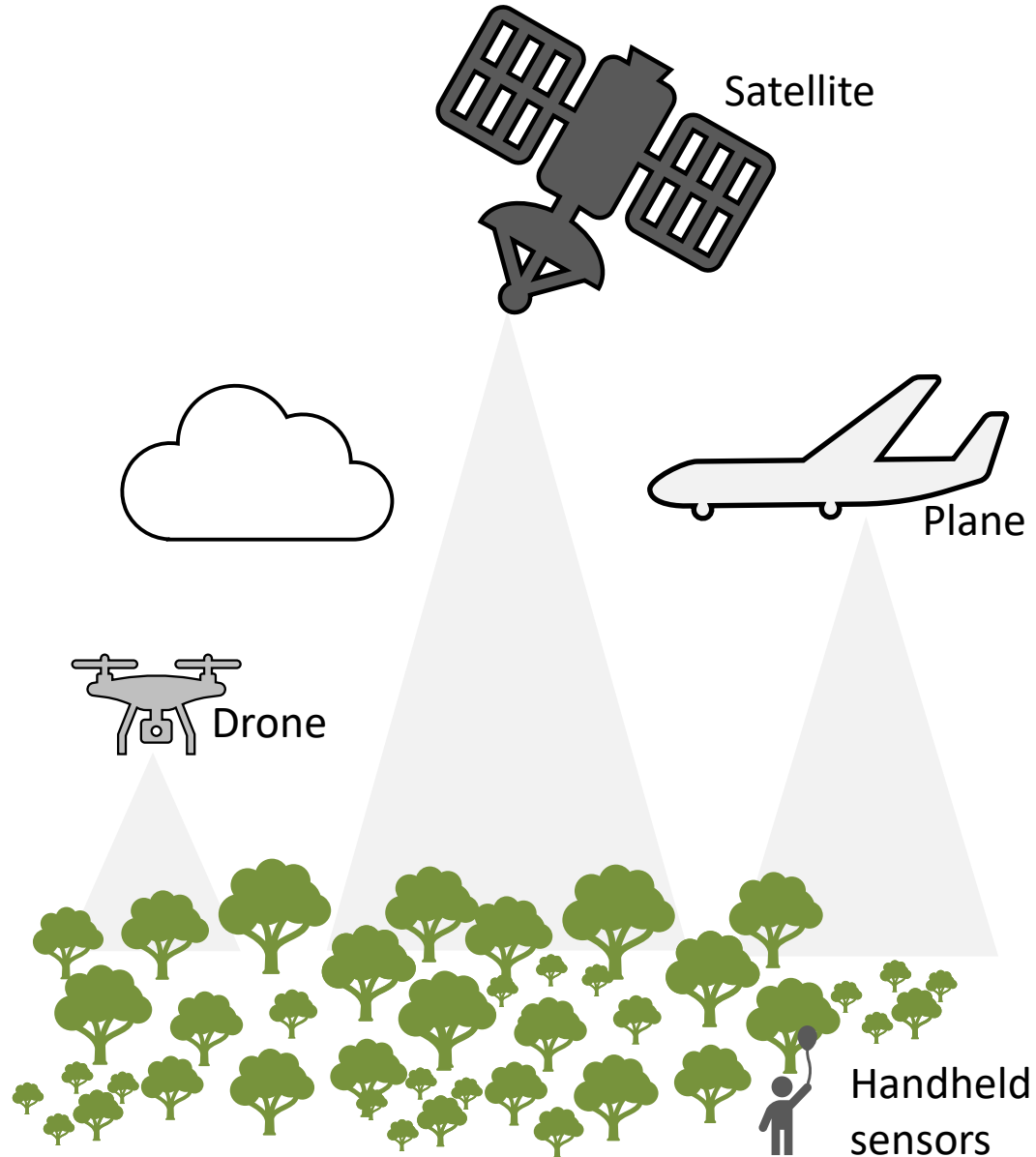
Satellite mapping and how FR
see this being used more widely
in the future?

Area of Current Use/Research

Regulation	Woodland loss monitoring Restock/colonisation monitoring Supporting investigations of illegal felling Trees Outside Woodlands (TOW)
Tree Health	Larch mapping Genus mapping Hyperspectral identification of stressed trees
Forest Operations	Digital terrain models Canopy height models Storm Damage Assessment
Forest Planning	Forest mensuration/inventory Storm damage assessment

- Moving from static to dynamic data
- A re-calibration of how we view and understand forestry data and information
- Data quality
- Skillsets required to turn data into helpful information
- IT implications
- Cost implications

Not to scale...



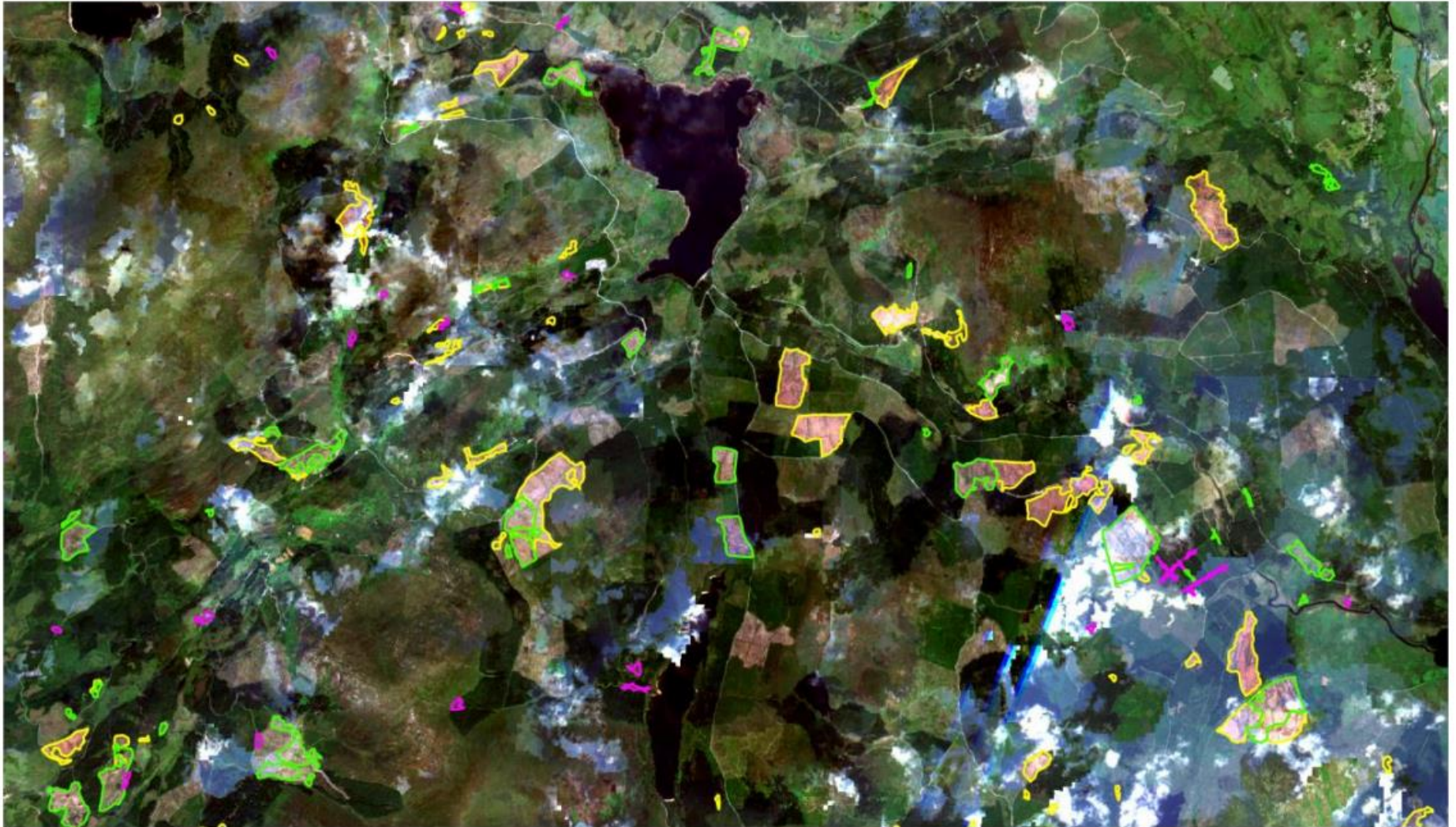

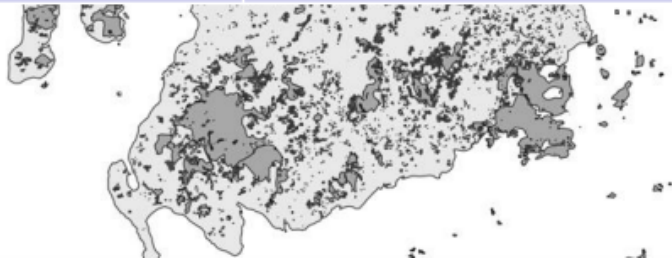


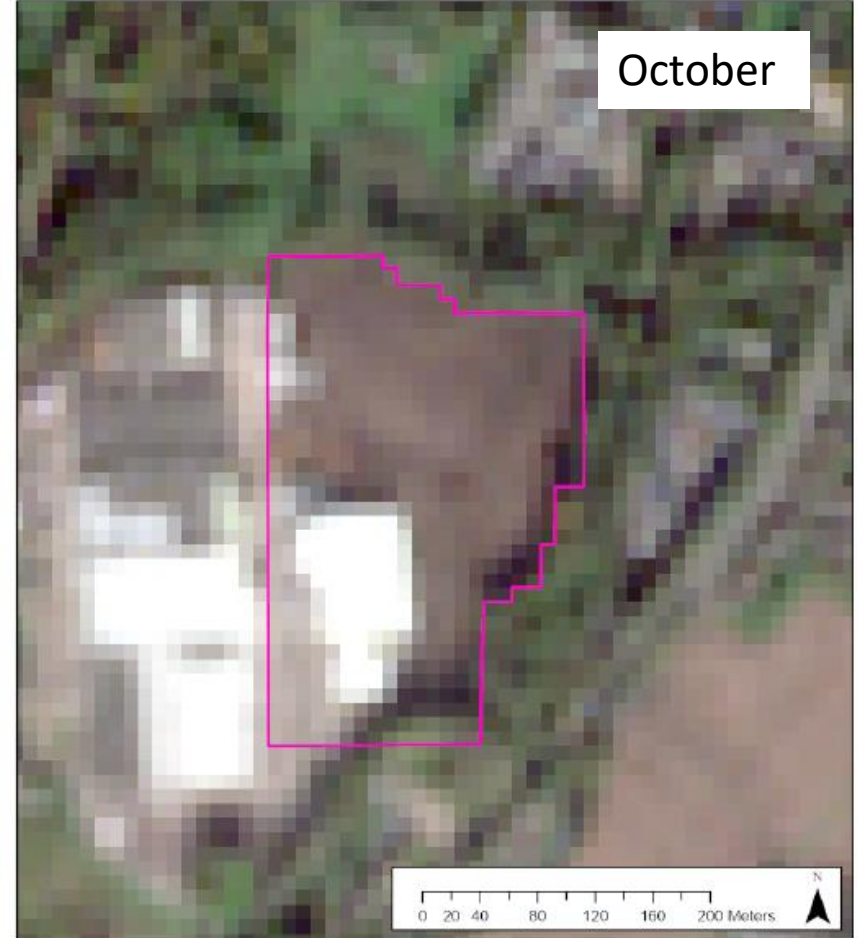
Figure 3: Close up of area within south-west Scotland showing identified clearfell

Licences, felled and FLS land

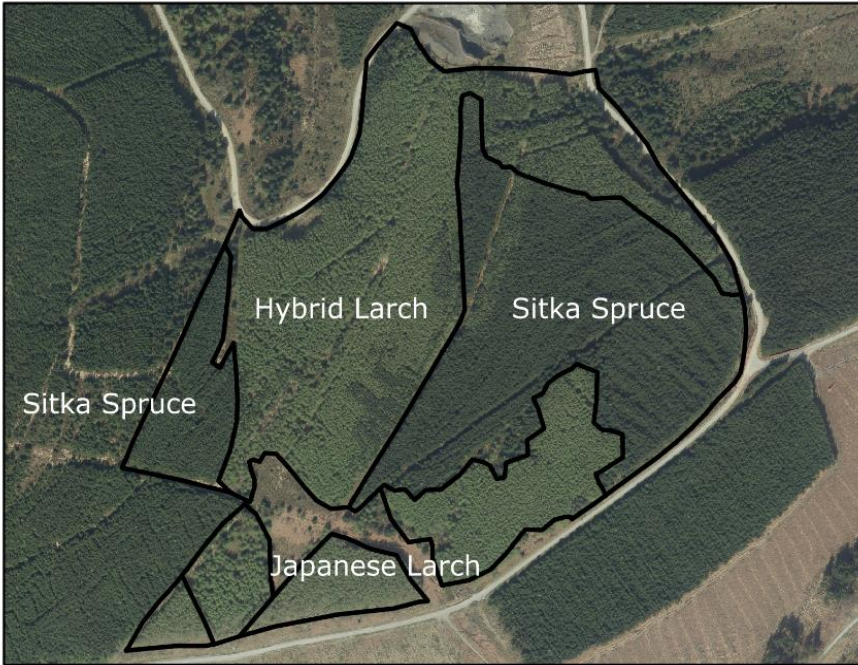


	Summer 2020 to Summer 2021 ha
Summer to summer clearfell	17,234
Felled inside licences	5,214
Felling outside licences	12,020
Felled inside public land	6,523
Licences inside public land	383
Felling outside licences and FLS	5,498
Felling outside FP Boundaries and FLS	2,820

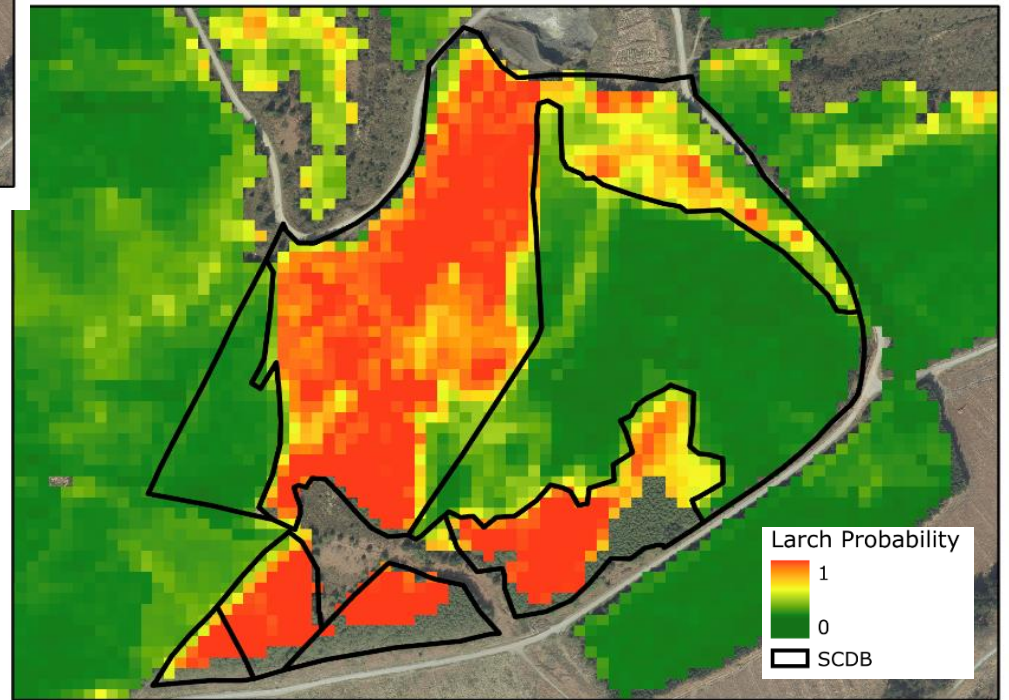


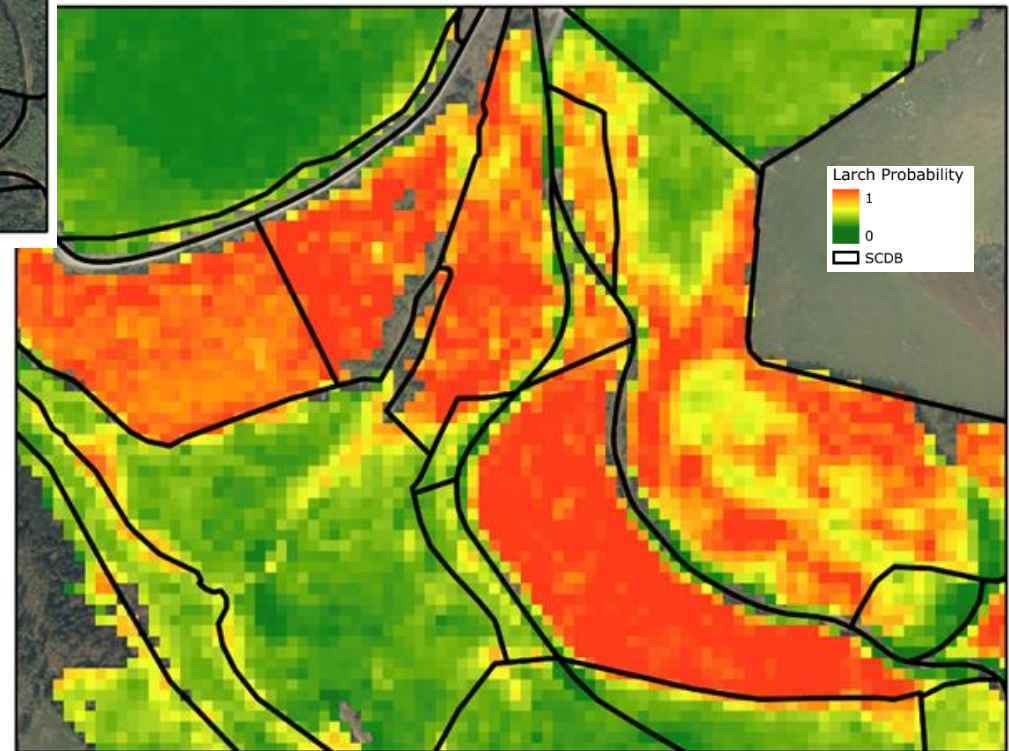






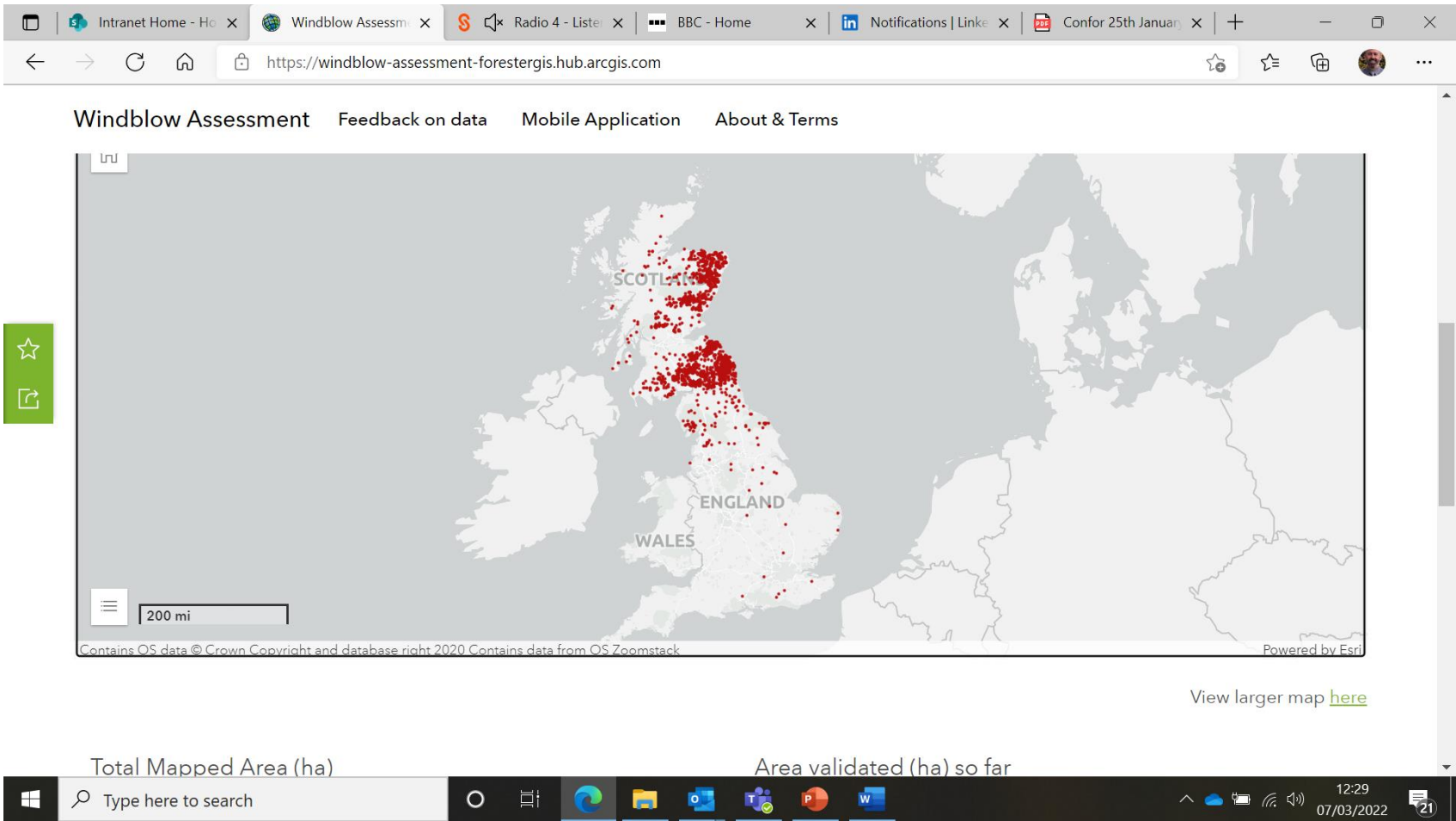
Aerial photography supplied by Bluesky International Ltd./Getmapping PLC.
Capture Date: 20/04/2019





Aerial photography supplied by Bluesky International Ltd./Getmapping PLC.
Capture Date: 20/04/2019

Windblow Assessment



Windblow Assessment Feedback on data Mobile Application About & Terms

SCOTLAND
ENGLAND
WALES

200 mi

Contains OS data © Crown Copyright and database right 2020 Contains data from OS Zoomstack Powered by Esri

View larger map [here](#)

Total Mapped Area (ha) Area validated (ha) so far

Type here to search 12:29 07/03/2022

Forester

SAVE MAPS PRINT TOOLS [Blank Map] 1:25,000 Search ...

GB • Scotland • West Argyll

Black Hill 184

Arinara Hill 312

Balnabraid Glen

5410 39ha

5411 30ha

5412 63ha

5413 68ha

5414 98ha

5415 71ha

5416 94ha

5417 75ha

5418 28ha

5419 29ha

5420 52ha

5421 35ha

5422 44ha

5423 83ha

5424 21ha

5425 1897ha

5426 23ha

5427 85ha

5428 25ha

5429 55ha

5430 80ha

5431 24ha

5432 68ha

5433 85ha

5434 41ha

5435 43ha

5445 20ha

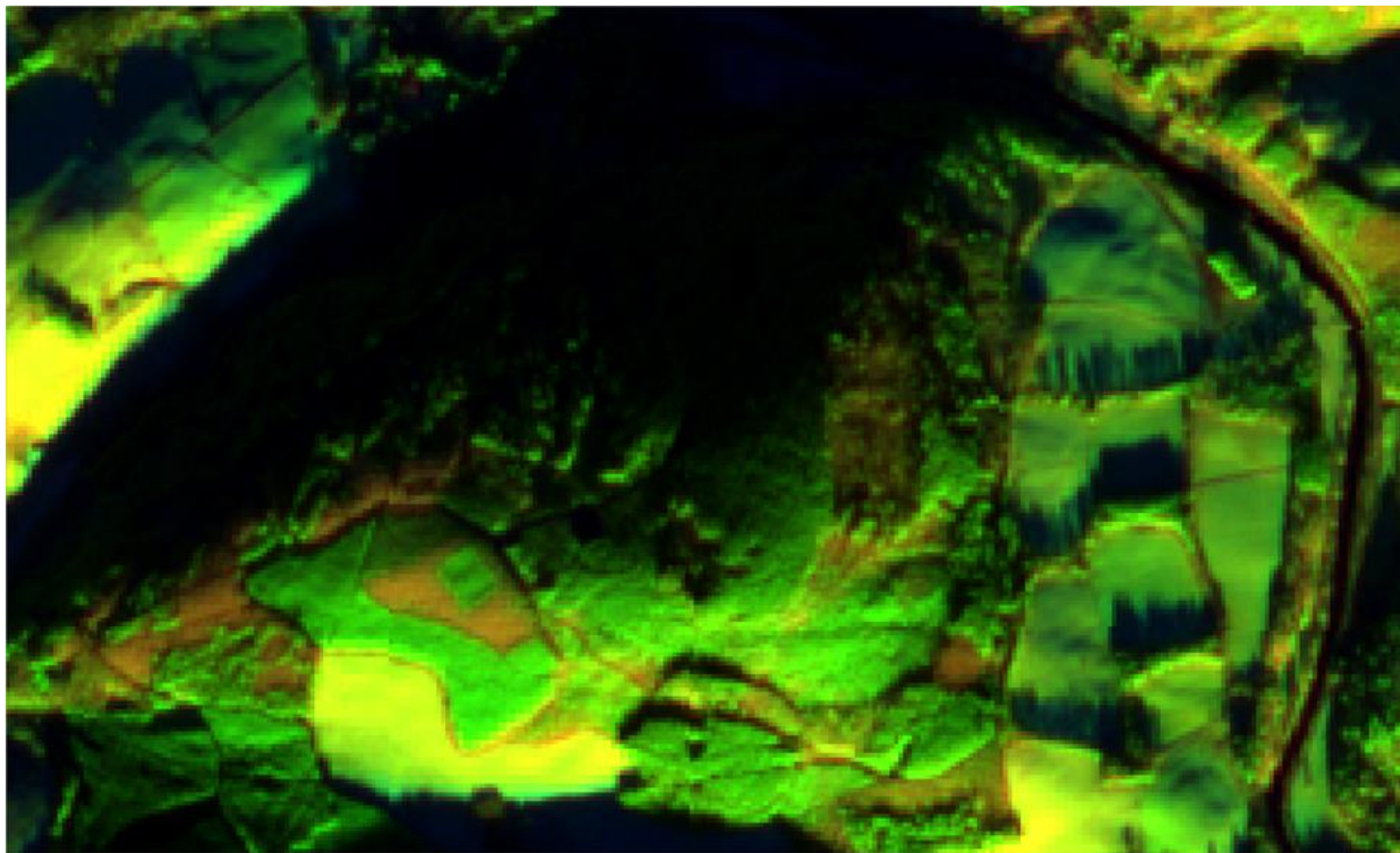
Scale: 0 0.3 0.6km

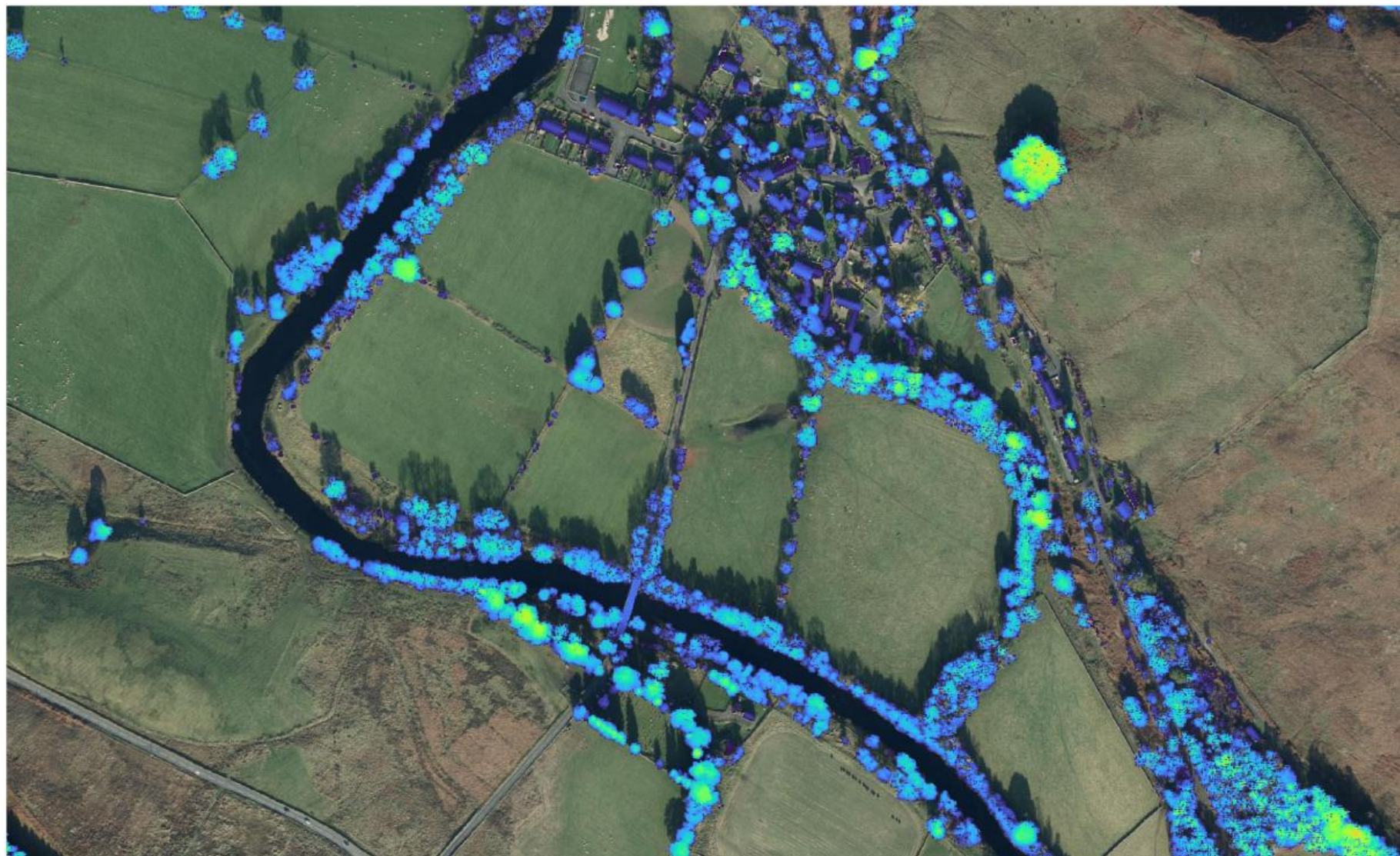
NR 7530 1419

17/03/2022 11:18

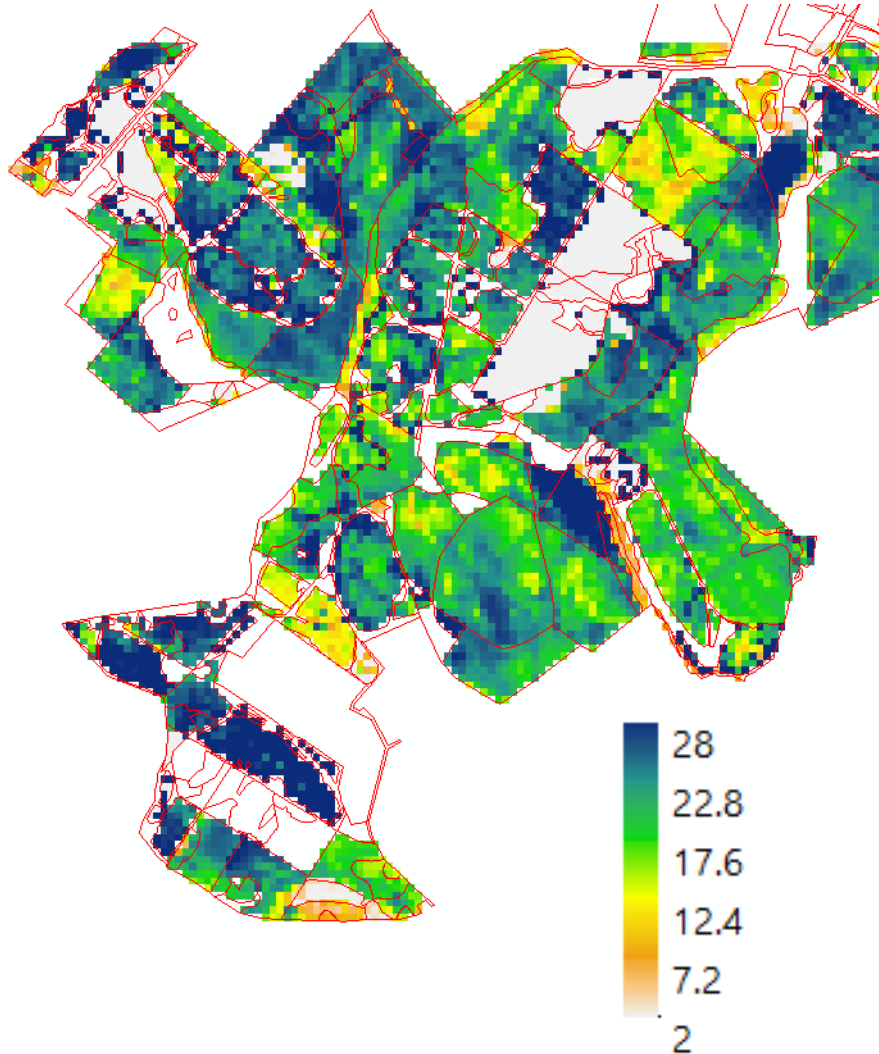
Windblow Assessment



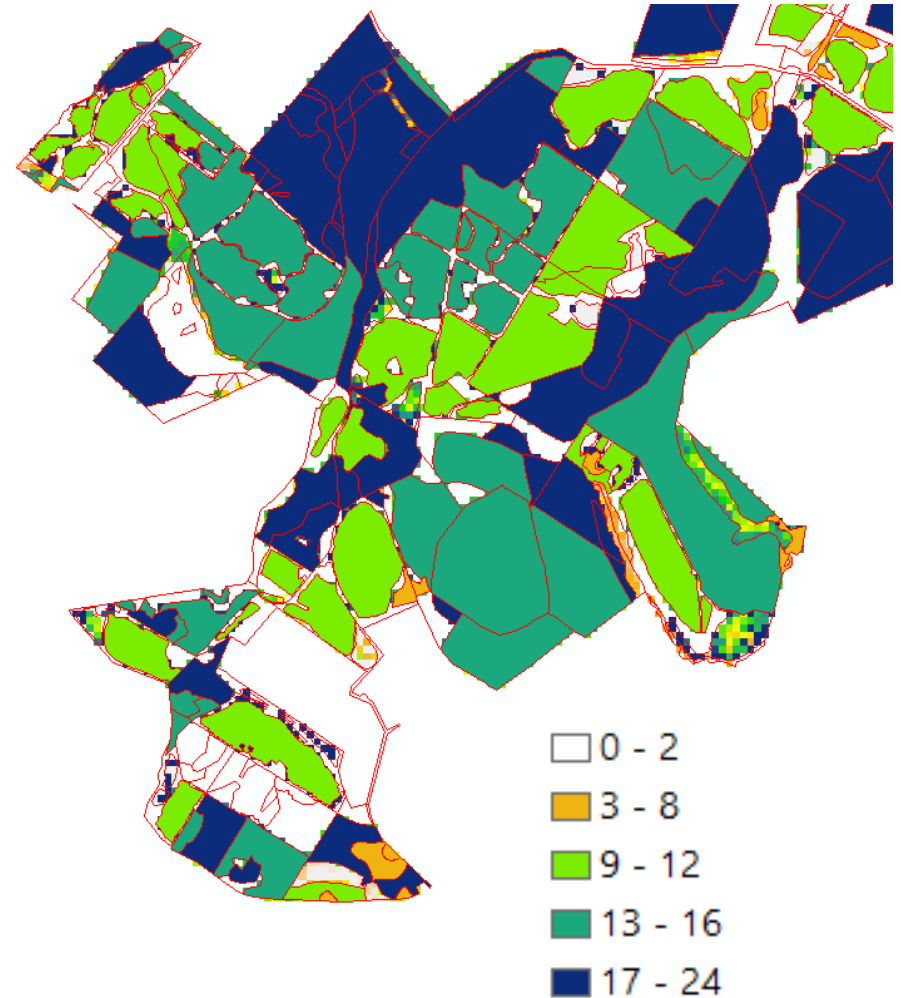




LiDAR Yield Class

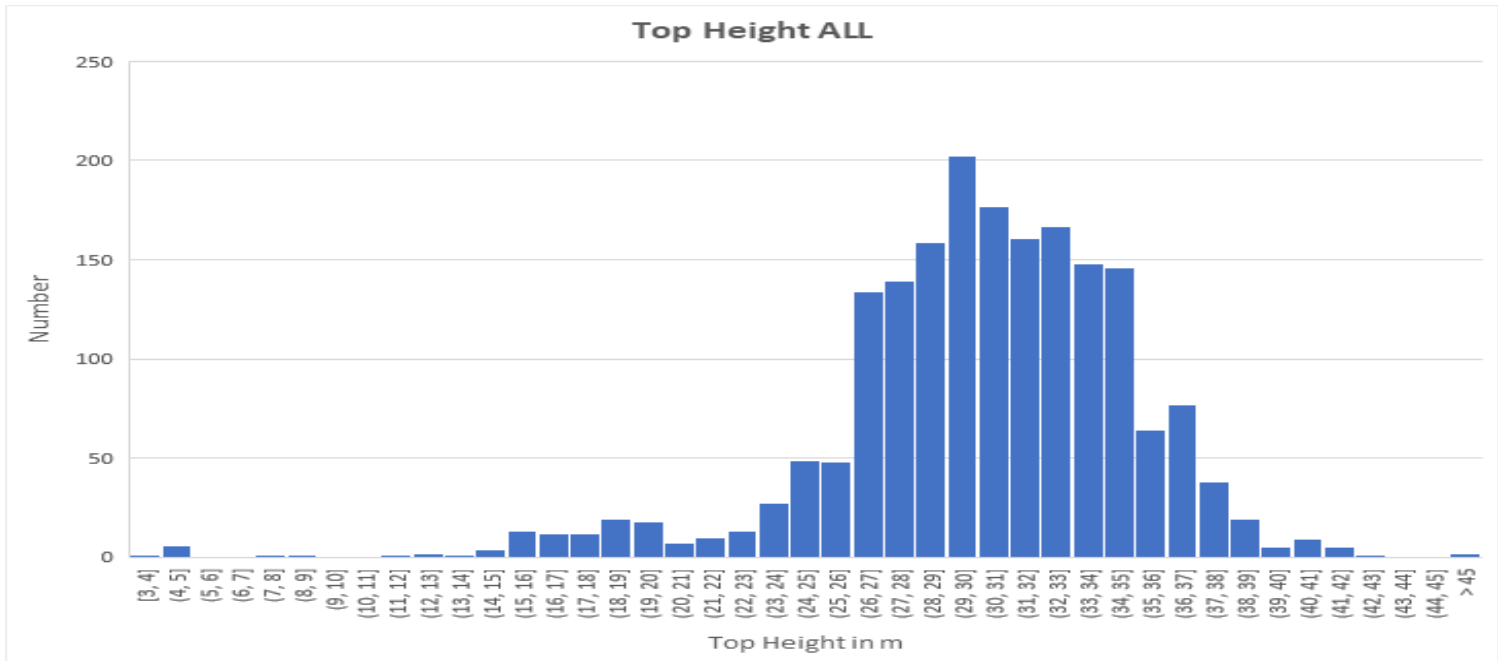


SCDB Yield Class



Volume and Top Height

	Tot Vol (in m ³)	Area (ha)	Perct Area
DF	314.09	0.27	0.16%
JL	678.34	0.9	0.52
LP	1,090.78	2.07	1.21
MB	309.35	0.54	0.32
MC	1,598.41	1.26	0.73
NS	16,481.68	13.95	8.18
SP	6,114.03	9.81	5.74
SS	139,405.66	142.02	83.14
Grand Total	151,407.60	170.82	100



Thank You

Nicol Sinclair

Head of Centre for Inventory Forecasting and
Operational Support (IFOS)

nicol.sinclair@forestresearch.gov.uk