

The new structure explained

SCOTLAND

On 1 April 2019, the devolution of forestry to Scottish Ministers was completed, as a result of the Forestry and Land Management (Scotland) Act 2018. With the new arrangements, Forestry Commission Scotland was replaced by a new Scottish Government agency called **Scottish Forestry** (SF).



SF is responsible for delivering Scottish Ministers' forestry policy, regulation, grants incentives, technical forestry advice and new cross border arrangements.

www.forestry.gov.scot

[@ScotForestry](#)



Forestry and Land Scotland (FLS) was established as an Executive Agency of the Scottish Government and replaces Forest Enterprise Scotland. The purpose of FLS is to manage forests and land owned by Scottish Ministers in a way that supports and enables economically sustainable forestry; conserves and enhances the environment; and delivers benefits for people and nature. FLS may manage other forested and non-forested land by arrangement, as set out in the Act.

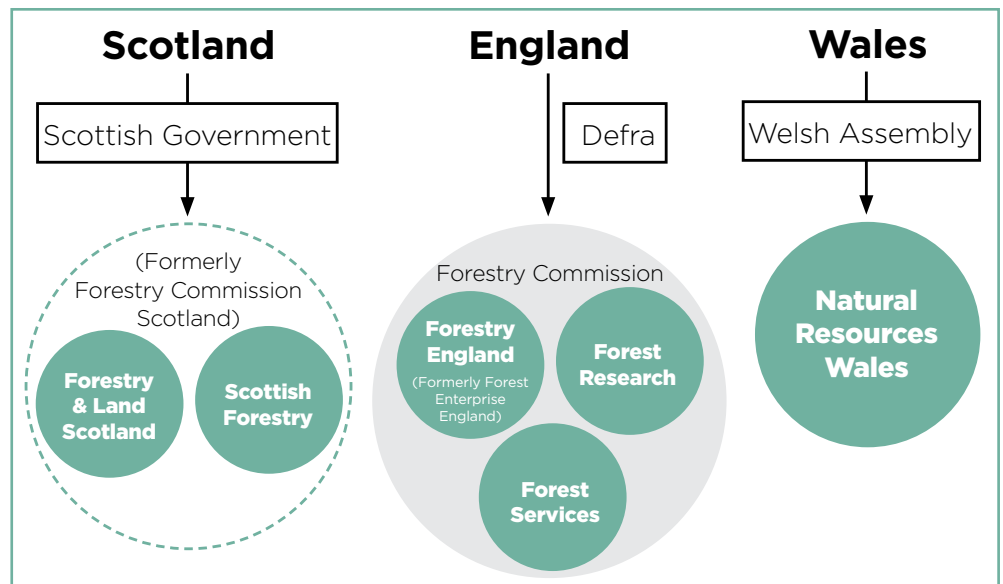
www.forestryandland.gov.scot

[@forestryls](#)

ENGLAND



Forest Enterprise England has been renamed **Forestry England**.



CONTACTS

SCOTLAND

Email addresses now name@forestry.gov.scot

Forestry and Land Scotland

1 Highlander Way, Inverness Business Park
Inverness IV2 7GB
T: 0300 067 6000
E: enquiries@forestryandland.gov.scot

Regional office North

T: (Golspie office) 0300 067 6850
T: (Smithton office) 0300 067 6100
E: enquiries.north@forestryandland.gov.scot

Regional office West

T: (Lochgilphead office) 0300 067 6650
T: (Fort William office) 0300 067 6870
E: enquiries.west@forestryandland.gov.scot

Regional office East

T: (Huntly office) 0300 067 6200
T: (Dunkeld office) 0300 067 6380
E: enquiries.east@forestryandland.gov.scot

Regional office Central

T: (Aberfoyle office) 0300 067 6600
T: (West Calder office) 0300 067 6700
E: enquiries.central@forestryandland.gov.scot

Regional office South

T: (Dumfries office) 0300 067 6900
T: (Newton Stewart office) 0300 067 6800
E: enquiries.south@forestryandland.gov.scot

Scottish Forestry

Silvan House, 231 Corstorphine Road
Edinburgh EH12 7AT
T: 0300 067 6555
E: Scottish.Forestry@forestry.gov.scot

ENGLAND

All email addresses have changed to name@forestryengland.gov.uk

Forestry England

Head office
620, Bristol Business Park, Coldharbour Lane,
Bristol, BS15 1EJ
T: 0300 067 4000
E: fe.England@forestryengland.uk

Area offices

Yorkshire and North-East

T: 0300 067 4900
E: yorkshirenortheast@forestrycommission.gov.uk

North-west and West Midlands

T: 0300 067 4190
E: nwwm@forestrycommission.gov.uk

East and East Midlands

T: 0300 067 44574
E: eandem@forestrycommission.gov.uk

South-east England & London

T: 0300 067 4420
E: southeast.fce@forestrycommission.gov.uk

South West

T: 0300 067 4960
E: southwest.fce@forestrycommission.gov.uk

Forest district offices

East England

T: 0300 067 4500
E: enquiries.eastfd@forestryengland.uk

West England

T: 0300 067 4800
E: westengland@forestryengland.uk

Westonbirt

T: 0300 067 4890
E: westonbirt@forestryengland.uk

North England

T: 0300 067 4200
E: enquiries.northengland@forestryengland.uk

South England

T: 0300 067 4601
E: enquires.southern@forestryengland.uk

Yorkshire

T: 0300 067 4300
E: north.york.moors.fdo@forestryengland.uk

Central England

T: 0300 067 4340
E: central.district@forestryengland.uk

Forest Research

Emails: forename.surname@forestresearch.gov.uk
Please check for updated email format
Alice Holt Research Station T: 0300 067 5600
Northern Research Station T: 0300 067 5900
Wales Research Station T: 0300 067 5774

WALES

Natural Resources Wales

c/o Customer Care Centre
Ty Cambria 29 Newport Rd, Cardiff CF24 0TP
T: 0300 065 3000
E: enquiries@naturalresourceswales.gov.uk