

14 December 2018
University of Northumbria

Superwood

How forestry and timber can
drive a low-carbon economy

Session 1: The scale of the opportunity

#Superwood



Sponsored by



Wood for Good



Confor
Promoting forestry and wood

Opportunities for the North East at a time of change

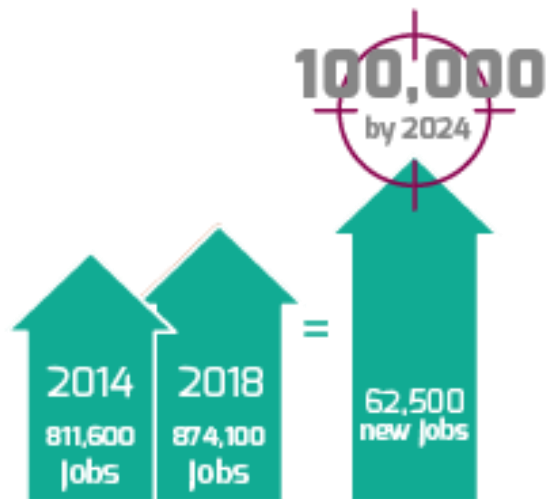
Richard Baker

North East
Local Enterprise Partnership



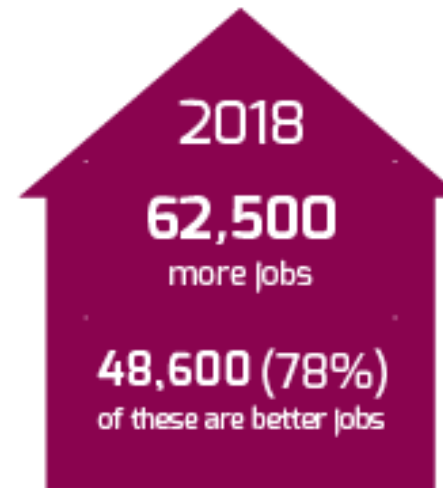
North East Strategic Economic Plan

100,000 *More and Better Jobs* by 2024



Target: Increase the number of jobs in the North East economy by 100,000 by 2024

Position at June 2018



Target: 70% of all jobs created from 2014 will be better jobs

Position at June 2018

Our Economy: Progress since 2014

Increase in employment – especially in ‘better jobs’

Increase in employment rate and economic activity rates

Improving qualifications profile

Business base is growing and becoming more dynamic

Success in securing foreign direct investment

Housing stock increasing and 21 Enterprise Zone sites launched

Continuing performance gaps

GVA per head

North East LEP £19,658

**England excl. London
£23,659**

If performance matched England excluding London would have:

114,000 additional jobs

**25,800 additional
businesses**

Key issues for action

Continuing to grow jobs base and increasing quality of employment opportunities available

Ensuring individuals have skills and competencies to take up available job opportunities

Continuing to grow business base and to help existing businesses to grow

Investing and innovating to drive improvements in productivity

A time of change?

Continuing change in UK economic data – good employment growth numbers, but future challenges in terms of low growth rates, investment, pay and productivity.

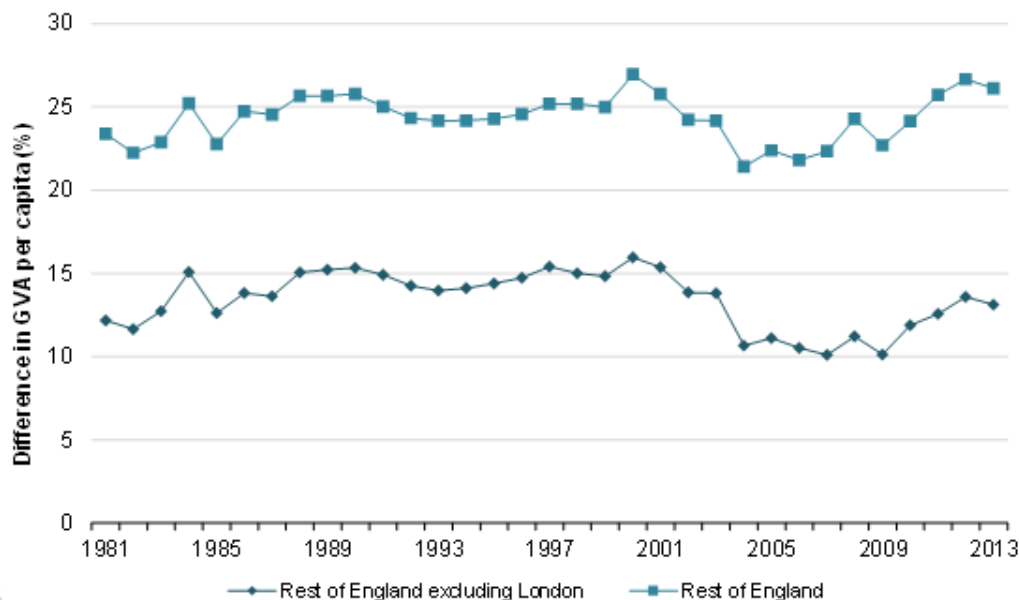
Significant changes in the economic policy and investment environment:

- UK departure from the European Union in phases
 - Impacts on exchange rates, confidence and investment
 - Changes to relationships, policies and funding
 - Significant changes for North East economy depending on deal
- Industrial Strategy implementation and wider policy agenda:
 - National resource streams focused on sectors and innovation
 - Focus on productivity and technology applications
 - Local industrial strategies and future regional resource streams
 - Environment Plan and Clean Growth
- Local changes across our geography stemming from devolution

Industrial strategy: Focusing on productivity and standards of living

UK Productivity challenge – UK underperforms compared with other countries

Persistent Northern productivity challenge compared with the rest of the UK



**North of England
Productivity compared
with England, and England
excluding London**

*Source: Cambridge Econometrics for
Transport for the North, 2015*

Contributing factors

Source: Cambridge Econometrics for Transport for the North, 2015

Enterprise – in terms of business start ups and growth

Sectoral structure (rather than mix)

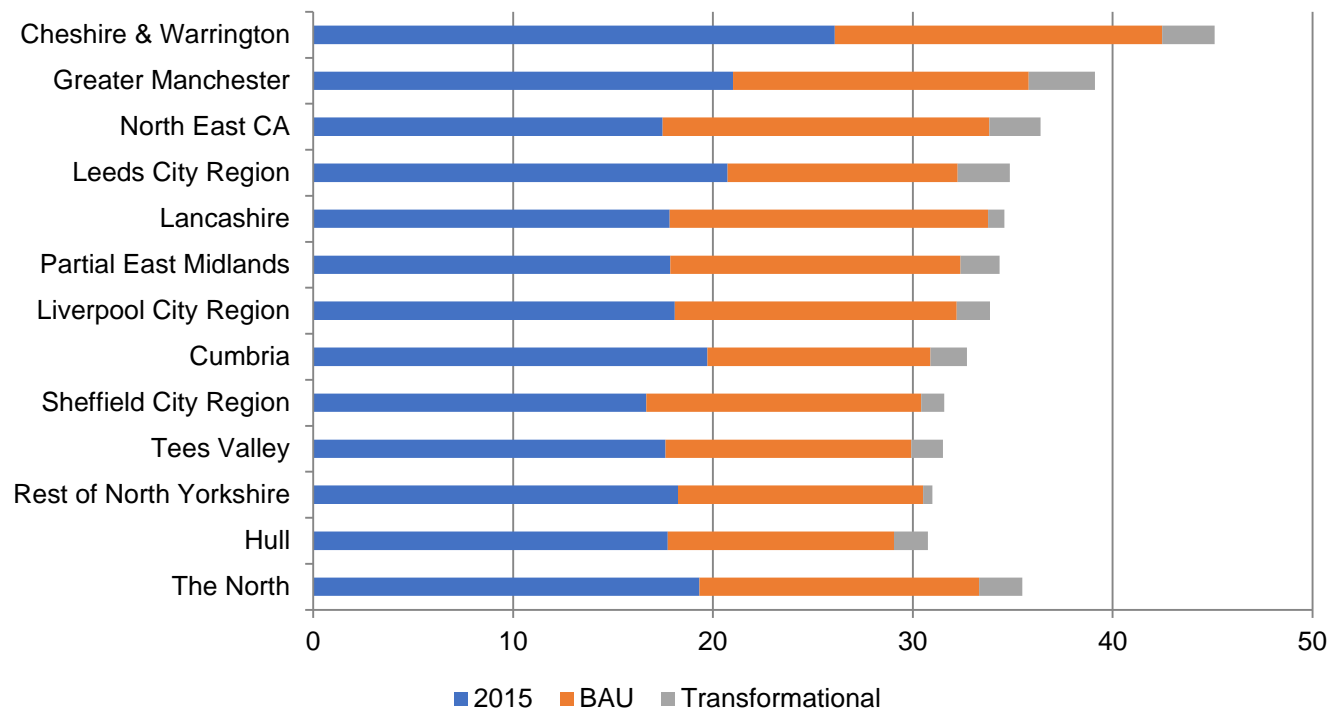
Skills

Innovation and technology

Agglomeration and connectivity

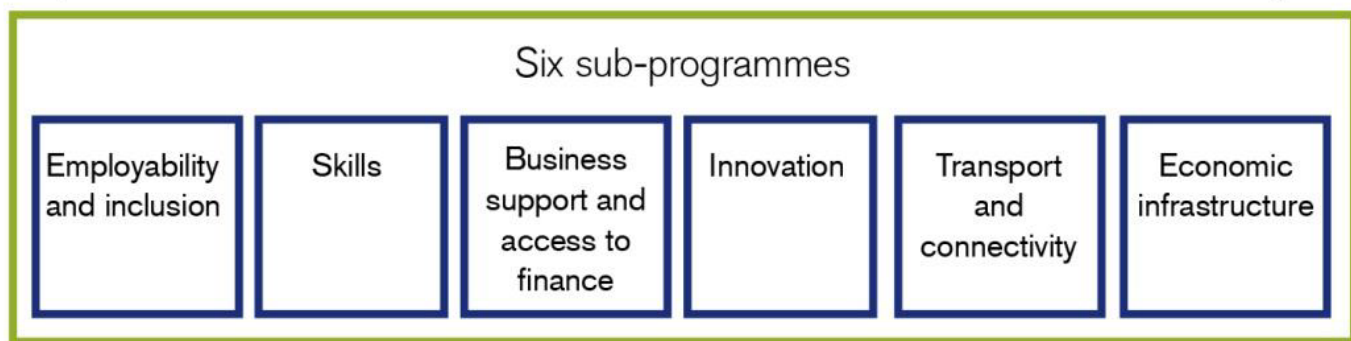
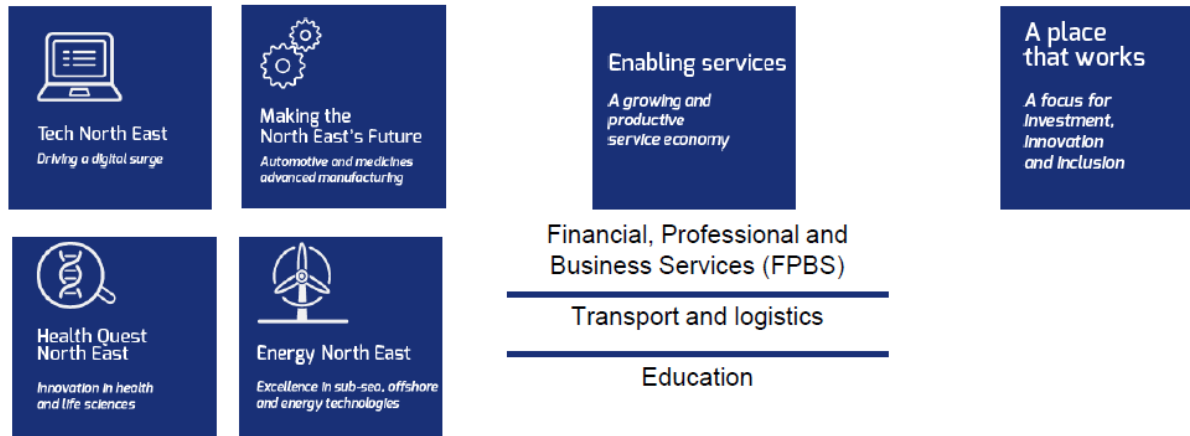
Future productivity in the Northern Powerhouse: North East opportunity

GVA per head (£000s), 2015 and 2050 'business as usual' (BAU) and transformational economic scenarios



Northern Powerhouse (2017) *Powerhouse 2050: The North's Productivity Routemap*

North East Strategic Economic Plan: Areas of opportunity and programmes



Implications for Superwood partners?

The changing economy at a time of Brexit

- Immediate opportunities and long term changes

- Future of the land sector and wider rural economy

- Changes in manufacturing and other sectors, supply chains, materials

Longer term directions in policy and the economy

- Clean growth, low carbon production

- Bio-economy and natural assets in design, fuels, buildings

- Digitalisation in design, production and logistics

North East priorities: Driving *More and Better* jobs and contributing to Local Industrial Strategy priorities

- Business formation and growth

- Driving innovation in products and processes

- Jobs, skills, opportunities for local people

- The economic infrastructure – housing, design, energy

www.nelep.co.uk

 @northeastlep  North East Local Enterprise Partnership

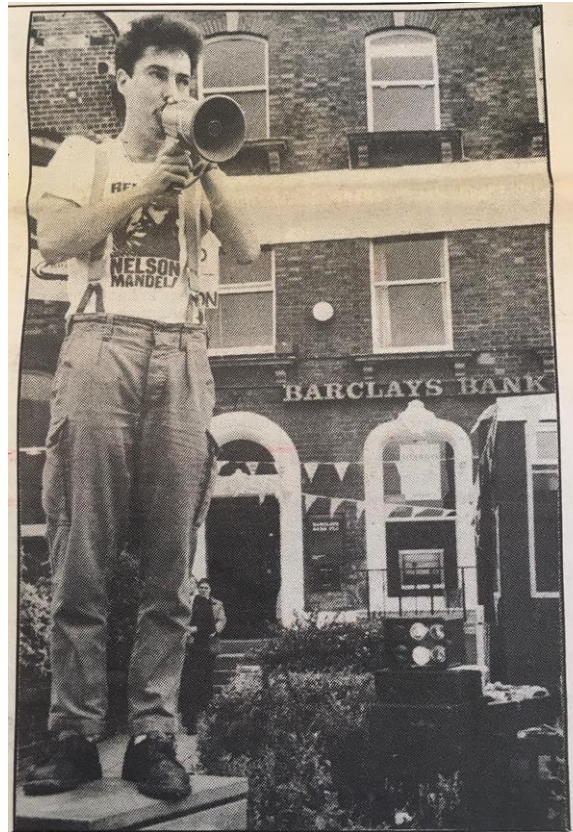
More trees, more timber construction: making the North East the greenest region in England

Paul Brannen

Labour MEP for the North East of England

www.northeastlabour.eu

@PaulBrannenNE



Paul Brannen

Labour MEP for the North East of England

www.northeastlabour.eu

@PaulBrannenNE



Christian Aid Cut the Carbon march in Leeds Photo: Christian Aid/Graham Lindley

Christian Aid partner in Bangladesh, Nazmul Chowdhury:
“Forget about making poverty history. Climate change will make poverty permanent.”

Paul Brannen

Labour MEP for the North East of England

www.northeastlabour.eu

@PaulBrannenNE



Paul Brannen

Labour MEP for the North East of England

www.northeastlabour.eu

@PaulBrannenNE



Paul Brannen

Labour MEP for the North East of England

www.northeastlabour.eu

@PaulBrannenNE

A new
bioeconomy strategy for a sustainable Europe



Paul Brannen

Labour MEP for the North East of England

www.northeastlabour.eu

@PaulBrannenNE

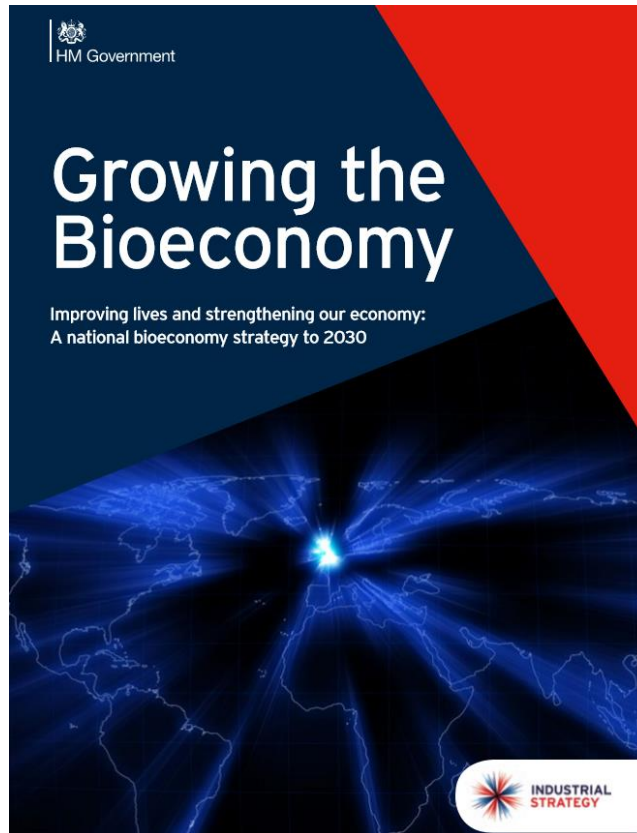


Paul Brannen

Labour MEP for the North East of England

www.northeastlabour.eu

@PaulBrannenNE



Paul Brannen

Labour MEP for the North East of England

www.northeastlabour.eu

@PaulBrannenNE

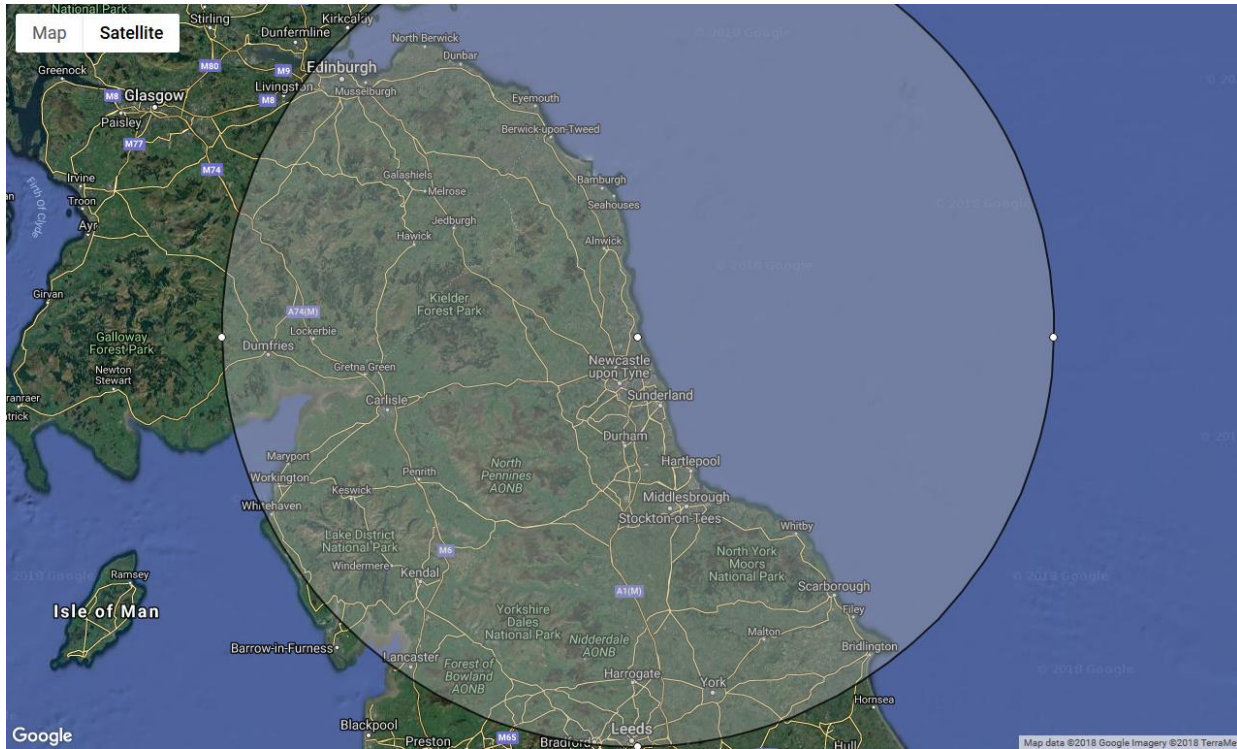


Paul Brannen

Labour MEP for the North East of England

www.northeastlabour.eu

@PaulBrannenNE

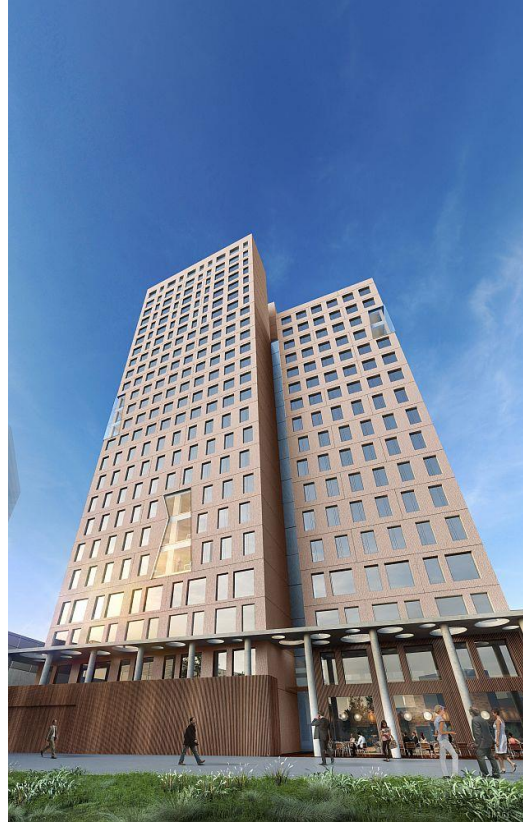


Paul Brannen

Labour MEP for the North East of England

www.northeastlabour.eu

@PaulBrannenNE



Paul Brannen

Labour MEP for the North East of England

www.northeastlabour.eu

@PaulBrannenNE



Paul Brannen

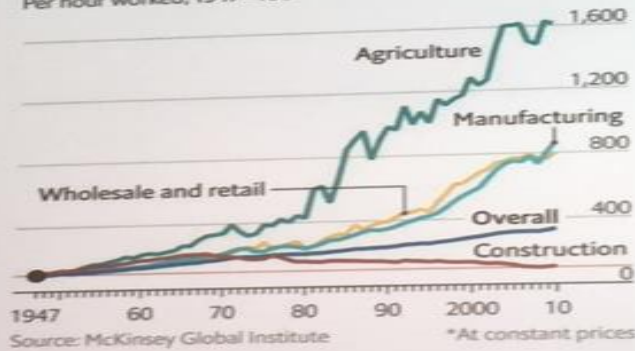
Labour MEP for the North East of England

www.northeastlabour.eu

@PaulBrannenNE

Why is off-site construction on the rise?

United States, gross value-added*
Per hour worked, 1947=100



Friday 30 November 2018 The Guardian

National

Prefab comeback as new factories herald modular revolution in UK homebuilding

Patrick Collinson

Britain is entering a new era of prefabricated homes with the opening of a Yorkshire factory that will build fully fitted three-bed homes costing as little as £65,000.

Eight houses fully fitted with kitchens and bathrooms will roll off the production line every day in Knaresborough, to be loaded on to lorries for delivery across the UK. Experts are hailing it as a revolution in British homebuilding that will slash the 40 weeks it takes to build the traditional home to just 10 days.

reach an annual target of 300,000 new homes in England. Last year nearly 220,000 homes were built.

"This is about challenging the ways we have done things in the past," Brokenshire said. "We want to see 300,000 homes being delivered by the mid-2020s, so we need to scale up and build more, better and faster. And that is precisely what this facility is about."

But families should not expect an Amazon-style service, where you order a home online and get it delivered the next day to a field near you. The first buyers of the factory-built homes are housing associations and councils, which can order in bulk. Nor are these Grand Designs-style



▲ Modular like homes are bolted together on site in Manchester after being transported by lorry from the factory in Knaresborough. Eight houses a day will be produced, fully fitted with



Paul Brannen

Labour MEP for the North East of England

www.northeastlabour.eu

@PaulBrannenNE

HERITAGE: NEWCASTLE - PINEAPPLE CAPITAL OF EUROPE? PAGE 12

The Journal

chroniclelive.co.uk, home of The Journal online

Wednesday, February 1, 2017

80p (subscription price 64p – see page 2)



**WHY THE NORTH
EAST NEEDS TWO
NEW FORESTS**

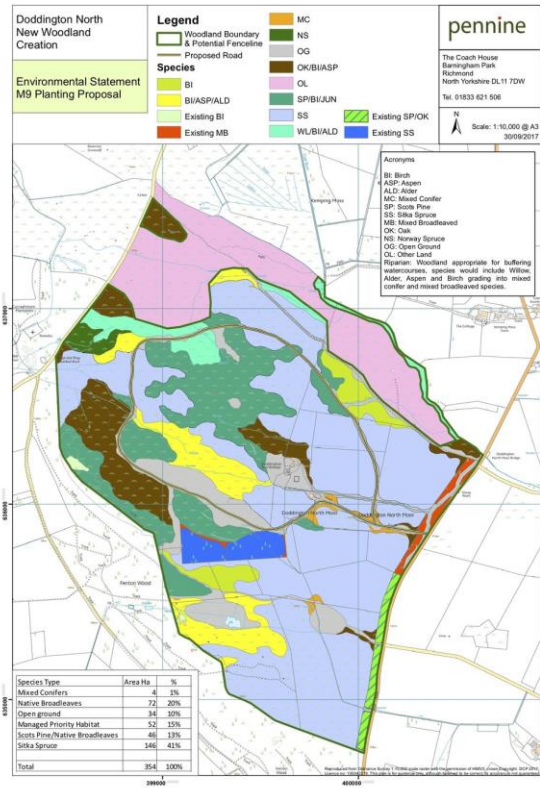
PAUL
BRANNEN:
PAGE 29

Paul Brannen

Labour MEP for the North East of England

www.northeastlabour.eu

@PaulBrannenNE



Paul Brannen

Labour MEP for the North East of England

www.northeastlabour.eu

@PaulBrannenNE



Paul Brannen

Labour MEP for the North East of England

www.northeastlabour.eu

@PaulBrannenNE

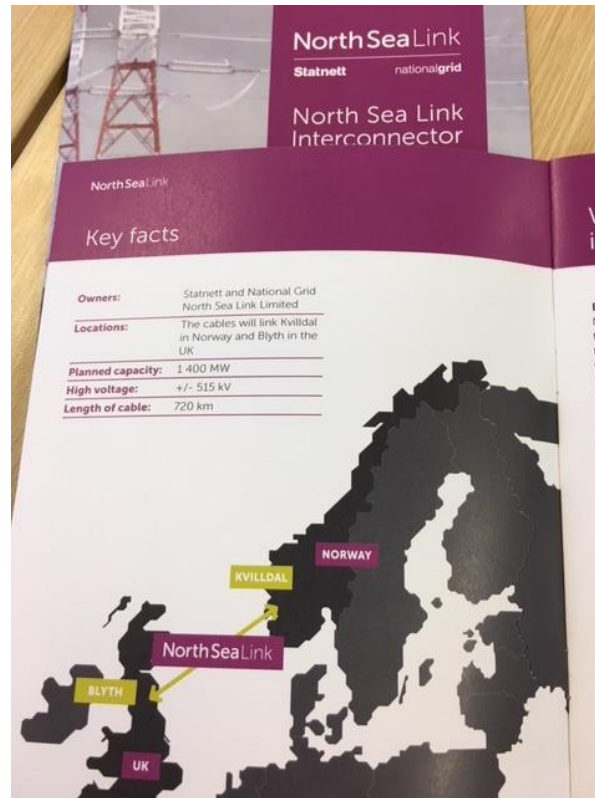


Paul Brannen

Labour MEP for the North East of England

www.northeastlabour.eu

@PaulBrannenNE



Paul Brannen

Labour MEP for the North East of England

www.northeastlabour.eu

@PaulBrannenNE



Paul Brannen

Labour MEP for the North East of England

www.northeastlabour.eu

@PaulBrannenNE



Paul Brannen

Labour MEP for the North East of England

www.northeastlabour.eu

@PaulBrannenNE

NEWS

Home Video World UK Business Tech Science Stories Entertainment & Arts

World Africa Asia Australia Europe Latin America Middle East US & Canada

Leitrim trees: Anger at Irish climate change scheme

By Shane Harrison
BBC NI Dublin correspondent

© 21 July 2018

f [messenger] [twitter] [email] Share



It's known as lovely Leitrim - the county is well known for its picturesque lakes, hills and wooded areas.

But planting large numbers of new trees is proving very controversial.

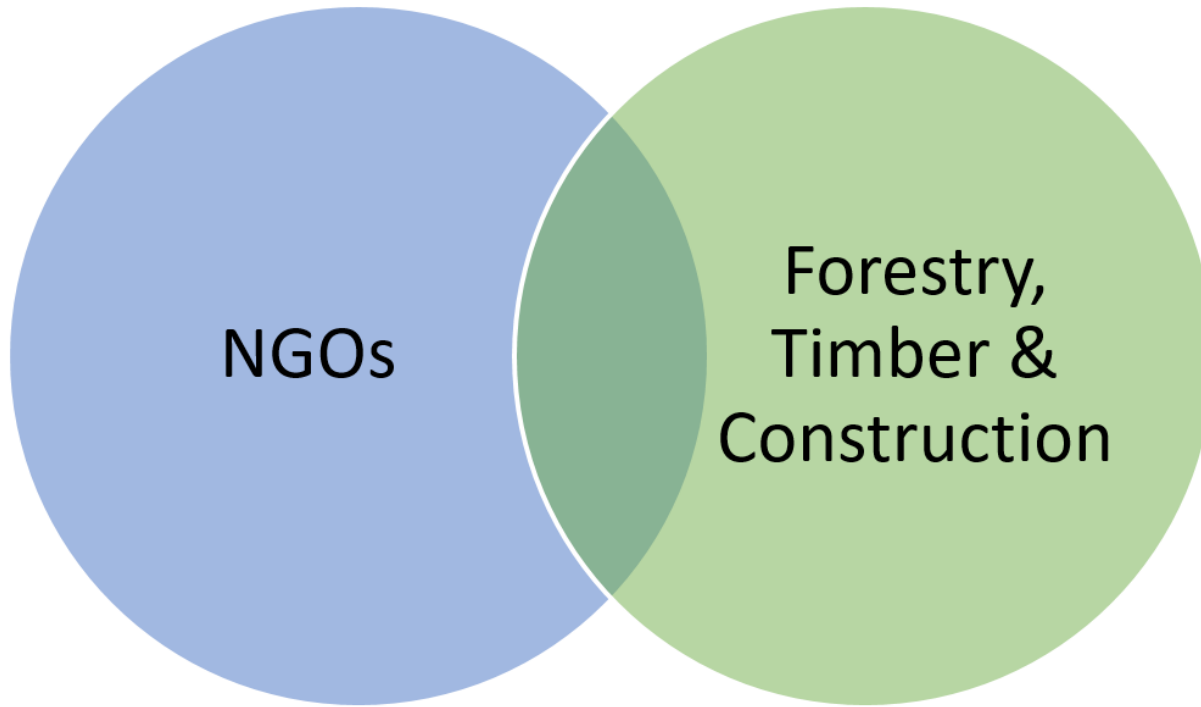


Paul Brannen

Labour MEP for the North East of England

www.northeastlabour.eu

@PaulBrannenNE



Paul Brannen

Labour MEP for the North East of England

www.northeastlabour.eu

@PaulBrannenNE



Paul Brannen

Labour MEP for the North East of England

www.northeastlabour.eu

@PaulBrannenNE



ORIGIN UK means that this meat has come from an animal born, raised and slaughtered in the UK

Breed of cattle: does not denote country of origin of the meat

Name & address: does not denote country of origin of the meat

Jones The Butchers

Beef Sirloin Steak



Weighted in UK 2004	Price	£76
Cut in UK 4004	Origin UK	Weight: 180g
Use by: DD/MYY/YYYY	Manufacture	Batch Code: 12/11/13/112044

Storage instructions: Keep refrigerated 0°C to + 5°C

Important: see meat, cook before eating

Packed in UK for Jones The Butchers, Stoneham, West County, NC1 1AB UK




West Country Beef



EU protected food name. This beef is from cattle born and raised in the West Country region of England on a forage based diet. All the meat must meet strict quality and traceability standards.

"Hygiene mark" with approved premises code. Does not denote country of origin of the meat

The "Red Tractor" logo is a quality mark. It shows that food is from "assured" farms, meeting high standards of animal welfare, environmental protection and food safety. The Union flag denotes food farmed, processed and packed in the UK

Paul Brannen

Labour MEP for the North East of England

www.northeastlabour.eu

@PaulBrannenNE



Paul Brannen

Labour MEP for the North East of England

www.northeastlabour.eu

@PaulBrannenNE



Northumberland
County Council

Northumberland: The Forest Friendly County

Peter Jackson, Leader, Northumberland County Council

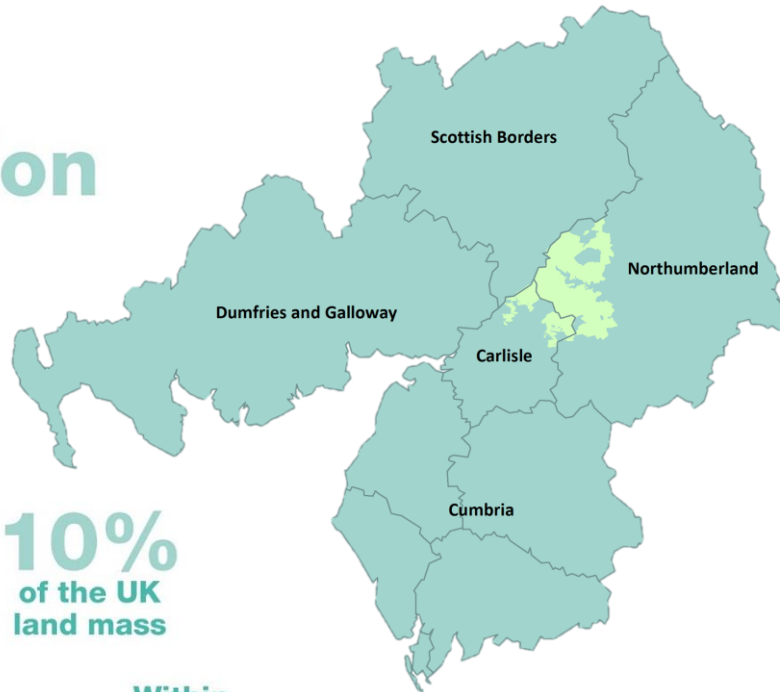
www.northumberland.gov.uk

Over
1 million
population

Centre of
the
UK



10%
of the UK
land mass



Within
2 hours drive of
14 million people

Planting the future: Why the wood processing industry needs more trees

Simon Hart FICFor., FRICS, Business Development Manager
Egger Forestry

Talk outline

Why we need more trees
Why aren't we planting more?
What needs to change

Egger Hexham in 2018



Policy context- afforestation targets

25 year Environment Plan- 7,500ha/yr England

**UK Gov's Committee for Climate Change-
27,000ha/yr, UK**

Scottish Government Policy- 10-15,000ha/yr

The ingredients for afforestation

1. Forest land value premium
2. Ability to secure planting approval

What needs to change

1. **Need to create a significant Forest land value premium**
2. **Ease ability to secure planting approval e.g. a Northumberland Forest Investment Zone**
3. **Political backing with regional targets.**