

Benefits of a 20ha farm forest

Biomass from
thinnings could
power **120**
homes, saving
840 tonnes
CO₂

Air quality
benefits
worth almost
£900,000

Over
£300,000
carbon
sequestration
benefit

Over **£550,000**
income to farmer
(equivalent
to over **£15,000**
per year)

Almost
£200,000
leisure
benefit

Over
£400,000
added value
to Welsh
economy

**Profitable
land use**
without the need
for ongoing
government
subsidy

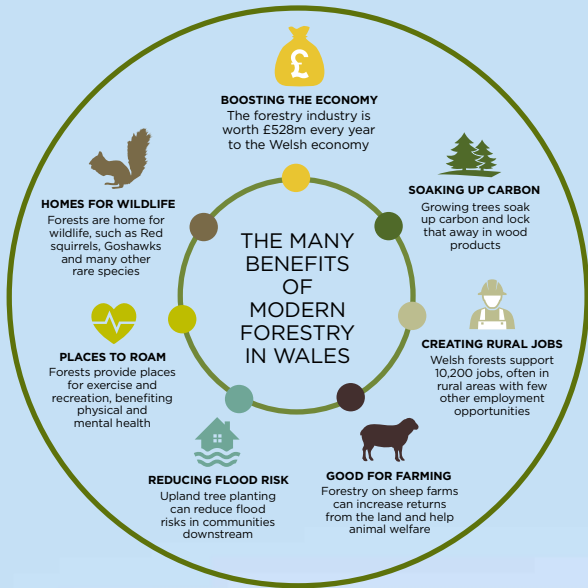
Enough wood
to build
1,600 timber
frame houses

Improved
biodiversity
and **habitat**
connectivity

Improved
water
quality and
reduced
flooding



Confor
Promoting forestry and wood
Hyrwyddo coedwigaeth a choed



The 20 hectare forest in this example, based on 75 % productive conifer and 25 % managed for environmental objectives, would allow the average Welsh farm to retain most of the land for sheep. Planting larger areas multiplies the private returns and public benefits.

Establishing new forestry involves upfront capital investment which few farmers are able to afford. Therefore, adequate grants are essential to realise the potential of forestry to support farmers on the land.

In return for this public investment, forestry yields significant public benefits. Once established, costs of management, harvesting and restocking are paid out of the proceeds of timber sales, making no further calls on the public purse.

Investment and benefit for farmers and the public of a 20 hectare productive forest

	Farmer		Public	
	per hectare	20 hectares	per hectare	20 hectares
Establishment and maintenance	-£4,500	-£90,000		
Welsh Government investment	£4,500	£90,000	-£4,500	-£90,000
Annual Premium	£4,200	£84,000	-£4,200	-£84,000
Timber sales: thinnings	£3,000	£60,000		
Added value to Welsh economy			£20,500	£410,000
Air quality*			£44,000	£880,000
Carbon*			£16,000	£320,000
Leisure*			£9,750	£195,000
Timber sales: clearfell	£20,000	£400,000		
Total over rotation	£27,200	£544,000	£81,550	£1,631,000
Average per year	£777	£15,543	£2,330	£46,600

35 year rotation ↓

Figures are based on current averages and may change over time. * Valuation of Welsh Forest Resources Report, 2017.

For more information contact
Eleanor Harris, Confor Policy Researcher,
eleanor@confor.org.uk, or visit www.confor.org.uk

